

VALSE ELAINE

(HESITATION)

SOLO B^b CORNET.

LIONEL BAXTER.

INTRO.

Moderato, cantabile.

p con amore.

poco rall.

VALSE.

p con amore.

poco rall.

a tempo.

p

mf

f poco rall.

p

a tempo.

1 2

Furioso.

fz

fz

rit.

1 2

Tempo I

con amore.

mf

poco rall.

a tempo.

p

a tempo.

p

1 2

Copyright for Europe and British Empire
(excluding Canada) Bosworth & Co., London,
Leipzig, Vienna, Zurich, Paris.

Printed in U.S.A.
Copyright MCMXV by Sam Fox
Publishing Co. Cleveland, Ohio.
International Copyright Secured.

Cantabile.

Clar.

Musical notation for the *Cantabile* section, featuring a clarinet part. The first staff begins with a *p* dynamic marking. The second staff continues with *p* dynamics. The third staff features a *mf* dynamic, followed by a *p* dynamic, and concludes with a first and second ending bracket.

FINALE.

con amore.

Musical notation for the **FINALE** section. The first staff is marked *con amore.* and features a *mf* dynamic. The second staff includes tempo markings *poco rall.* and *a tempo.* with a *p* dynamic. The third staff features *mf*, *f poco rall.*, and *p* dynamics.

Furioso.

Musical notation for the **Furioso** section. The first staff is marked *fz*. The second staff features a first and second ending bracket, followed by a *rit.* marking and a *p* dynamic.

Tempo I.

con amore.

Musical notation for the **Tempo I** section. The first staff is marked *con amore.* and features a *mf* dynamic. The second staff includes tempo markings *poco rall.* and *a tempo.* with *p*, *mf*, and *f poco rall.* dynamics. The third staff is marked *a tempo.* and *meno mosso.* with *p*, *dim*, and *pp* dynamics. The section concludes with the instruction *Clar. & Bar.*

VALSE ELAINE

(HESITATION)

PICCOLO (D^b)

LIONEL BAXTER.

INTRO.

Mod'to, cantabile.

VALSE.

15 *rall.* *p* 24 *mf* *f* *poco rall.* 4

P con amore. *mf* *a tempo.* *poco rall.* *p* *a tempo.* *mf* *f* *poco rall.* *p* *f*

Furioso. *f₂* *f₂*

2 1 *Tempo I.* *rit.* *P con amore.* *a tempo.* *mf* *poco rall.* *p* *a tempo.* *mf* *f* *poco rall.*

Cantabile. 8 *mf* *p* *p* 8

mf *p* *p* *mf* *p*

FINALE.

p *con amore.* *mf*

p *mf* *a tempo.*

mf *f* *poco rall.* *p* *a tempo.* *f*

Furioso.

fz *fz* *f*

fz *fz* *f* *rit.*

Tempo I.

p *con amore.* *mf*

p *mf* *a tempo.*

mf *f* *poco rall.* *p* *a tempo.* 12

VALSE ELAINE

(HESITATION)

OBOE.

LIONEL BAXTER.

INTRO.

Mod'to, cantabile.

VALSE.

16 24

mf — *f* poco rall.

a tempo 1 || 2 *Furioso.* *f* *fz* *fz*

1 || 2 1 *rit.*

Tempo I.

24

mf — *f* poco rall. — *p* *a tempo.*

32

Cantabile.

p

mf *p* 1 || 2

FINALE.

24

mf — *f* poco rall. — *p* *a tempo.* *f*

Furioso.

fz *fz*

Tempo I.

24

1 || 2 1 *rit.* *mf*

a tempo.

meno mosso. 8

f poco rall. — *p* *p dim.* — *pp*

VALSE ELAINE

BASSOON.

(HESITATION)

LIONEL BAXTER.

INTRO.

Mod'to, cantabile.

16

VALSE.

con amore.

The Valse section consists of ten staves of music. It begins with a treble clef, a key signature of two flats (B-flat and E-flat), and a 3/4 time signature. The first staff starts with a measure rest of 16 measures, followed by a 3-measure rest. The tempo is marked 'con amore' and the dynamics range from *p* to *mf*. The second staff includes markings for 'a tempo', 'poco rall.', and 'poco rall. 1'. The third staff is marked 'Furioso' and 'a tempo'. The fourth staff has a first ending marked '1' and 'rit.', followed by 'Tempo I. con amore'. The fifth staff is marked 'a tempo' and 'poco rall.'. The sixth staff includes 'poco rall. 1 a tempo.' and 'Cantabile.'. The seventh and eighth staves continue the 'Cantabile' section with dynamics from *mf* to *p*. The ninth and tenth staves conclude the Valse section with dynamics from *mf* to *p*.

FINALE.

The Finale section consists of seven staves of music. It begins with a treble clef, a key signature of two flats, and a 3/4 time signature. The first staff is marked 'con amore' and 'poco rall.'. The second staff includes 'a tempo.', 'poco rall. 1', and 'a tempo.'. The third staff is marked 'Furioso.' and 'a tempo.'. The fourth staff has a first ending marked '1' and 'rit.', followed by 'Tempo I. con amore.'. The fifth staff is marked 'a tempo.' and 'poco rall. 1'. The sixth staff includes 'a tempo.', 'meno mosso.', and 'mf 3'. The seventh staff concludes the piece with a *pp* dynamic marking.

VALSE ELAINE

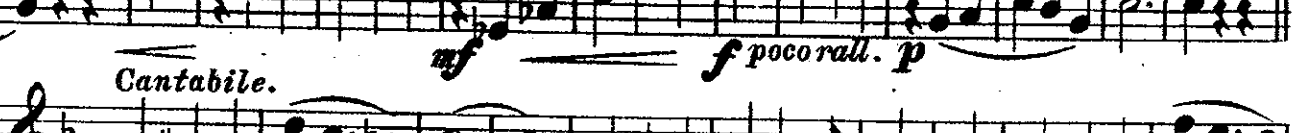
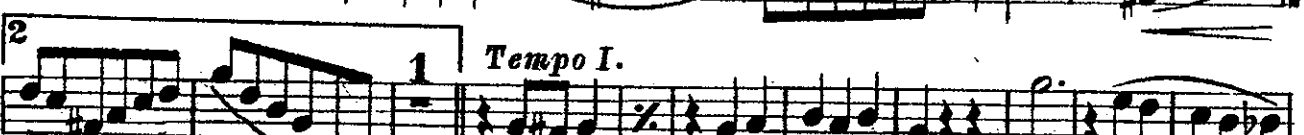
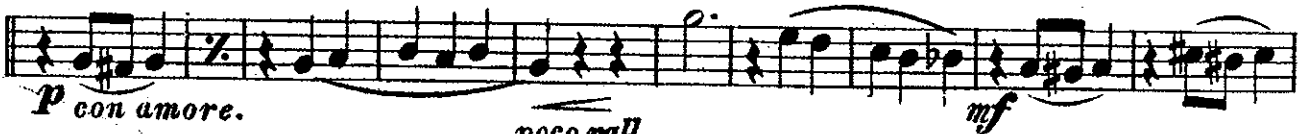
(HESITATION)

E♭ CLARINET.

LIONEL BAXTER.

INTRO.

Mod'to, cantabile.



FINALE.
p con amore. *a tempo.* *mf*

Tempo I.
p con amore. *a tempo.* *mf*

VALSE ELAINE

1st. B \flat CLARINET.

(HESITATION)

LIONEL BAXTER.

INTRO.

Mod^{to}, cantabile.

p con amore.

poco rall.

VALSE.

p con amore.

mf

a tempo. *poco rall.* *a tempo.*
p *mf* *f*

p con amore. *poco rall.* *mf*

poco rall. *a tempo.* *p*

a tempo. *poco rall.* *p* *f* *fz*

fz

rit. *p*

Tempo I.

con amore.

con amore. *poco rall.* *a tempo.* *mf*

poco rall. *a tempo.* *p*

poco rall. *a tempo.* *mf* *f* *p*

Cantabile.

p *mf* *p#* *p*
mf *p#* *p*
p *mf* *p*
p *mf* *p*
p *p*

FINALE.

p con amore.

poco rall. a tempo.

Furioso.

Tempo I.

con amore.

meno mosso.

p *mf* *f* *fz* *fz* *fz* *p*
mf *p* *f* *fz* *fz* *fz* *p*
fz *p* *p* *p* *p* *p* *p* *p*
poco rall. a tempo. *mf* *mf*
poco rall. a tempo. *mf* *mf*
f *p* *p* *p* *p* *p* *p* *p* *dim* *pp*

VALSE ELAINE

(HESITATION)

2nd. B^b CLARINET.

LIONEL BAXTER.

INTRO.

Mod'to, cantabile.



VALSE.



Tempo I.



Cantabile.



Musical staff with notes and dynamics *p* and *p#*.

Musical staff with notes and dynamics *p*.

Musical staff with notes and dynamics *mf* and *p*.

Musical staff with notes and dynamics *p*, first and second endings.

FINALE.

Musical staff with notes and dynamics *p con amore.*, *mf*, *poco rall.*

a tempo.

Musical staff with notes and dynamics *p*, *mf*, *f*, *poco rall.*, *a tempo.*

Furioso.

Musical staff with notes and dynamics *fz*.

Musical staff with notes and dynamics *p s.*, *rit.*

Tempo I.

Musical staff with notes and dynamics *con amore.*, *mf*.

poco rall. *a tempo.*

Musical staff with notes and dynamics *p*, *mf*, *f*, *poco rall.*

a tempo. *meno mosso.*

Musical staff with notes and dynamics *p*, *p*, *dim.*, *pp*.

VALSE ELAINE

(HESITATION)

3rd. CLARINET.

LIONEL BAXTER.

INTRO.

Mod'to, cantabile.

Musical notation for the Intro section, 3rd Clarinet part. The key signature has one flat (B-flat), and the time signature is common time (C). The music consists of a single melodic line with a 4-measure rest, followed by a 3-measure rest, and then a melodic phrase. Dynamics include *p* and *poco rall.*

VALSE.

poco rall.

Musical notation for the Valse section, 3rd Clarinet part. The key signature has one flat (B-flat), and the time signature is 3/4. The music features a melodic line with a *p* dynamic and *con amore.* marking, followed by a *mf* dynamic.

a tempo.

poco rall. 1

a tempo. 1

Musical notation for the Valse section, 3rd Clarinet part. The key signature has one flat (B-flat), and the time signature is 3/4. The music features a melodic line with a *mf* dynamic, followed by a *f* dynamic, and then a *p* dynamic.

Musical notation for the Valse section, 3rd Clarinet part. The key signature has one flat (B-flat), and the time signature is 3/4. The music features a melodic line with a *fz* dynamic and a *Furioso.* marking.

Musical notation for the Valse section, 3rd Clarinet part. The key signature has one flat (B-flat), and the time signature is 3/4. The music features a melodic line with a *p* dynamic and a *rit.* marking.

Tempo I.

poco rall.

Musical notation for the Valse section, 3rd Clarinet part. The key signature has one flat (B-flat), and the time signature is 3/4. The music features a melodic line with a *p* dynamic and *con amore.* marking, followed by a *mf* dynamic.

a tempo.

poco rall. 1

a tempo.

Musical notation for the Valse section, 3rd Clarinet part. The key signature has one flat (B-flat), and the time signature is 3/4. The music features a melodic line with a *p* dynamic, followed by a *mf* dynamic, and then a *f* dynamic.

Cantabile.

Musical notation for the Valse section, 3rd Clarinet part. The key signature has one flat (B-flat), and the time signature is 3/4. The music features a melodic line with a *p* dynamic.

First musical staff with notes and slurs.

Second musical staff with notes and slurs.

Third musical staff with notes and slurs.

FINALE. *poco rall.*

Fourth musical staff with notes and slurs.

a tempo. *con amore.* *mf* *f* *poco rall.* *p* *a tempo.*

Fifth musical staff with notes and slurs.

Furioso.

Sixth musical staff with notes and slurs.

Seventh musical staff with notes and slurs.

Tempo I. *poco rall.*

Eighth musical staff with notes and slurs.

a tempo. *poco rall.* *1* *a tempo.*

Ninth musical staff with notes and slurs.

meno mosso. *dim* *pp*

Tenth musical staff with notes and slurs.

VALSE ELAINE

SOP. SAXOPHONE.

(HESITATION)

LIONEL BAXTER.

INTRO.

Mod'to, cantabile.

16

VALSE.

poco rall. *a tempo.* *p* *con amore.* *mf* *f* *poco rall.*

a tempo. 1 2 *Furioso.* *fz* *fz* 1 2 *rit.* *p*

Tempo I *con amore.* *a tempo.* *mf* *f* *poco rall.* *p* *a tempo.*

32 *Cantabile.* *p* *mf* *p* *p* *mf* *p*

FINALE. *a tempo.* *p* *con amore.* *mf* *f* *poco rall.* *p* *f* *poco rall.*

Furioso. *fz* *fz* 1 2 *rit.* *Tempo I.* *con amore.* *poco rall.* *a tempo.*

mf *a tempo.* *meno mosso.* 3 *mf* *f* *poco rall.* *p*

VALSE ELAINE

(HESITATION)

ALTO SAXOPHONE.

LIONEL BAXTER.

INTRO
Mod'to, cantabile.

16 VALSE.
p con amore. *mf*

poco rall. *a tempo.* *p* *mf* *f* *poco rall.*

a tempo. *p* *f* *Furioso.* *fz* *fz*

Prit.

Tempo I. *poco rall.*

con amore. *mf*

a tempo. *mf* *f* *poco rall.* *a tempo.* *p*

32 Cantabile. *p* *mf* *mf*

FINALE. *poco rall.*

p con amore. *mf*

a tempo. *mf* *f* *poco rall.* *a tempo.* *p* *f*

Furioso. *fz* *fz*

Tempo I. *p* con amore. *poco rall.* *a tempo.*

mf *p* *a tempo.* *meno mosso.* *p* *3*

mf *f* *poco rall.* *p* *dim - - pp*

VALSE ELAINE

TENOR SAXOPHONE.

(HESITATION)

LIONEL BAXTER.

INTRO.

Mod'to, cantabile.

16

VALSE.

poco rall.

p con amore. *mf*

a tempo. *p* *mf* *f* *poco rall.* *p a tempo.* *f* *Furioso.*

p rit. *con amore.* *mf* *poco rall.* *p a tempo.* *Tempo I.*

a tempo. *p* *mf* *f* *p a tempo.* *poco rall.*

Cantabile. *p* *mf* *mf*

FINALE. *p con amore.* *mf* *poco rall.*

a tempo. *p* *mf* *f* *p a tempo.* *poco rall.*

Furioso. *f* *f*

p rit *con amore.* *Tempo I.*

mf *poco rall.* *a tempo.* *p*

mf *f* *p a tempo.* *meno mosso.*

VALSE ELAINE

BAR. SAXOPHONE.

(HESITATION)

LIONEL BAXTER.

INTRO.

Mod'to, cantabile.

16

VALSE.

p *con amore.* *mf*
a tempo. *poco rall. 1* *a tempo.*
poco rall. *Furioso.* *mf* *f* *p*

1 2 1 *Tempo I.*
rit. p. *con amore.*
poco rall. *a tempo.*
mf *f* *p*
poco rall. 1 *a tempo.* *Cantabile.*
mf *f* *p*

FINALE.
p *con amore.* *poco rall.*
a tempo. *poco rall. 1* *a tempo.*
p *Furioso.* *mf* *f* *p*

1 2 1 *Tempo I.*
rit. p. *con amore.* *mf*
poco rall. *a tempo.* *poco rall. 1*
a tempo. *meno mosso.* *f*
p 3

VALSE ELAINE

E♭ CORNET.

(HESITATION)

LIONEL BAXTER.

INTRO.

Mod'to, cantabile.

p con amore. **VALSE.**
poco rall. *p* *a tempo, con amore.* *mf*
poco rall. *a tempo.* *p* *mf* *f poco rall.*
a tempo. 1 || 2 **Furioso.** *fz* *fz*
1 || 2 *rit.* *p* **Tempo I.**
poco rall. *a tempo, con amore.*
mf *a tempo.* **Cantabile.** *p*
mf *f poco rall.* *p* *p*
mf *p* *p*
1 || 2
FINALE. *poco rall.*
a tempo, con amore. *mf*
a tempo. *mf* *f poco rall.* *p* *f*
fz *fz*
1 || 2 **Tempo I.**
poco rall. *rit.* *p*
a tempo, con amore.
mf *a tempo.* *p*
a tempo. *meno mosso*
mf *f poco rall.* *p* *p* *dim.* *pp*

VALE ELAINE

(HESITATION)

1st. B^b CORNET.

LIONEL BAXTER.

INTRO.

Mod'to, cantabile.

Tromb.

p *con amore.* *mf* *poco rall.*

VALE.

Tromb.

p *con amore.* *mf* *poco rall.*

a tempo.

a tempo.

p *mf* *f poco rall.* *p* 1

2

Furioso.

f *fz* *fz*

1

1

2

Tromb.

Tempo I.

p *rit* *con amore.* *mf*

poco rall.

a tempo.

p *mf* *f poco rall.*

a tempo.

Cantabile.

p 1st. time Clar 2nd. time Cor.

Printed in U.S.A.

mf mf mf p

mf mf

FINALE.
Tromb.

p con amore. mf

poco rall. a tempo.

p mf f poco rall.

a tempo.

Furioso.

p f

1

2 Tromb. Tempo I.

rit p con amore. mf

poco rall. a tempo.

p mf f poco rall.

a tempo. meno mosso.

p pp dim

3

VALSE ELAINE

2nd. & 3rd. B^b CORNETS.

(HESITATION)

LIONEL BAXTER.

INTRO.

Mod'to, cantabile.

p *poco rall.*
p *con amore.* *mf* *poco rall.*
a tempo. *con amore.* *mf* *a tempo.* *Furioso.*
fz *fz* *fz*
1 2 *rit.* *Tempo I.*
p *con amore.* *a tempo.* *mf*
a tempo. *poco rall.* *p* *Cantabile.*
mf *f poco rall.* *p* *mf*
mf *FINALE* *mf* *mf* *mf*
p *con amore.* *a tempo.* *mf*
poco rall. *a tempo.* *Furioso.* *mf* *f poco rall.*
p *fz* *fz* *fz*
Tempo I. 1 2 *rit.*
p *con amore.* *a tempo.* *mf* *poco rall.*
poco rall. *a tempo.* *meno mosso.* *mf* *f*
3

1st. & 2nd. E^b HORNS. VALSE ELAINE

LIONEL BAXTER.

INTRO.
Mod'to, cantabile.

(HESITATION)

p con amore.
poco rall. VALSE. *p con amore.*
mf *poco rall.* *p a tempo.*
Furioso. *mf* *f poco rall.* *p a tempo.*
1 2 *rit.* *Tempo I.*
mf *p* *con amore.* *poco rall.* *a tempo.*
mf *p* *a tempo*
Capabile. *mf* *f poco rall.* *p*
p *mf* *p*
p *mf*
FINALE.
p con amore. *poco rall.* *a tempo.*
mf *p* *a tempo.*
Furioso. *mf* *f poco rall.* *p*
Tempo I.
rit. *con amore.*
mf *poco rall.* *a tempo.*
mf *p* *a tempo.* *meno mosso.* 5

3rd. & 4th. E^b HORNS. VALSE ELAINE

LIONEL BAXTER.

INTRO

(HESITATION)

Mod'to, cantabile.

p con amore.
poco rall. VALSE.
p con amore.
poco rall. *a tempo.*
mf
f *poco rall.* *p*
Furioso.
f 1 2 *rit.* *Tempo I.*
p con amore.
poco rall. *a tempo.*
mf
mf *f* *poco rall.* *p a tempo.*
Canabile.
p *mf* *p*
p *mf*
FINALE.
p con amore.
poco rall. *a tempo.*
mf *p*
Furioso.
f *mf* *f* *poco rall.* *p a tempo.*
f 1 2 *rit.* *Tempo I.*
p con amore
poco rall. *a tempo.*
mf *p*
mf *f* *poco rall.* *p a tempo.*
meno mosso. 5

VALSE ELAINE

(HESITATION)

1st. & 2nd. TROMBONES.

LIONEL BAXTER.

INTRO.

Mod'to, cantabile.

p con amore.

mf *poco rall.*

VALSE.

p con amore. *mf*

poco rall. *p a tempo.*

mf *f* *poco rall.* *p a tempo.*

Furioso.

f

p rit.

Tempo I.

p con amore. *mf*

poco rall. *p a tempo.*

mf *f* *poco rall.* *p a tempo.*

Cantabile. 2nd. time only

First staff of music, bass clef, 3/4 time signature. It begins with a repeat sign and a first ending bracket. Dynamics include *p* and *mf*.

2nd. time only

Second staff of music, bass clef, 3/4 time signature. It begins with a repeat sign and a first ending bracket. Dynamics include *p*.

Third staff of music, bass clef, 3/4 time signature. It begins with a repeat sign and a first ending bracket. Dynamics include *mf* and *p*.

FINALE.

Fourth staff of music, bass clef, 3/4 time signature. Dynamics include *p con amore.* and *mf*.

Fifth staff of music, bass clef, 3/4 time signature. Dynamics include *poco rall.* and *p a tempo.*

Sixth staff of music, bass clef, 3/4 time signature. Dynamics include *mf*, *f poco rall.*, and *p a tempo.*

Furioso.

Seventh staff of music, bass clef, 3/4 time signature. Dynamics include *f*.

Eighth staff of music, bass clef, 3/4 time signature. Dynamics include *p rit.*

Tempo I.

Ninth staff of music, bass clef, 3/4 time signature. Dynamics include *p con amore.* and *mf*.

Tenth staff of music, bass clef, 3/4 time signature. Dynamics include *poco rall.*, *p a tempo.*, and *mf*.

men mosso.

Eleventh staff of music, bass clef, 3/4 time signature. Dynamics include *f poco rall.*, *p a tempo.*, *p*, and *pp*. It features first and second ending brackets with measures 1 and 5 indicated.

VALSE ELAINE

3rd. TROMBONE.

(HESITATION)

LIONEL BAXTER.

INTRO. Mod'to, cantabile.

p con amore. *poco rall.* *mf*

p con amore. *mf* *poco rall.*

a tempo. *mf* *f* *poco rall. 1* *a tempo.* *p*

Furioso. *f*

Tempo I. *p* con amore. *rit.*

mf *poco rall.* *p* *a tempo.* *Cantabile.*

mf *f* *p* *poco rall. 1* *a tempo.* *p* *small notes 2d. time.*

mf *p*

mf *p* *mf*

FINALE. *p* con amore. *a tempo.* *mf* *poco rall.* *1* *a tempo.* *p*

Furioso. *f* *mf* *f*

Tempo I. *p* con amore. *rit.*

mf *poco rall.* *p* *a tempo.*

mf *f* *p* *poco rall. 1* *a tempo.* *meno mosso.* *5*

mf *f* *p*

Printed in U. S. A. *pp*

VALSE ELAINE

1st. & 2nd. TENORS.

(HESITATION)

LIONEL BAXTER.

INTRO.

Mod'to, cantabile.

p con amore. *mf* *poco rall.*

VALSE.

p con amore. *mf* *poco rall.*

p Furiosa. *mf* *f poco rall. p a tempo.*

f *Tempo I.*

p rit. *con amore. a tempo.*

mf poco rall. p

mf poco rall. p a tempo. *Cantabile. small notes 2d. time.*

mf p p

mf p p

p con amore. *mf poco rall.*

p Furioso. *mf f poco rall. p a tempo.*

p rit. *Tempo I. con amore.*

mf poco rall. a tempo.

mf poco rall. p a tempo. p meno mosso.

VALSE ELAINE

(HESITATION)

3rd. TROMBONE or Bb BASS

LIONEL BAXTER.

INTRO. Mod'to, cantabile.

p *con amore.* *mf* *poco rall.*

p *con amore.* *mf* *a tempo.* *poco rall. 1 a tempo.*

Furioso. *f* *mf* *f* *p*

Tempo I. *rit.* *a tempo.* *p* *con amore.* *mf* *poco rall. 1 a tempo.*

Cantabile. *mf* *p* *a tempo.* *small notes 2d. time.*

mf *p* *mf* *p*

FINALE. *con amore.* *p* *mf* *a tempo.* *poco rall. 1 a tempo.*

Furioso. *f* *mf* *f*

Tempo I. *rit.* *a tempo.* *p* *con amore.* *mf* *poco rall. 1 a tempo.*

mf *p* *mf* *p* *a tempo.* *meno mosso.* *5*

VALSE ELAINE

(HESITATION)

3rd. TROMBONE or Bb BASS

LIONEL BAXTER.

INTRO. Mod'to, cantabile.

poco rall.

Staff 1: Intro. Mod'to, cantabile. Dynamics: *p*, *mf*. Tempo: *poco rall.*

Staff 2: Valse. *con amore*. Dynamics: *p*, *mf*. Tempo: *a tempo*, *poco rall. 1*.

Staff 3: *Furioso*. Dynamics: *p*, *mf*, *f*. Tempo: *a tempo*.

Staff 4: *Tempo I*. Dynamics: *f*, *p*. Tempo: *Tempo I*.

Staff 5: *Cantabile*. Dynamics: *mf*, *p*. Tempo: *poco rall. 1*, *a tempo*.

Staff 6: Dynamics: *mf*, *f*, *p*, *mf*, *p*. Tempo: *a tempo*.

Staff 7: Dynamics: *mf*, *p*, *mf*, *p*. Tempo: *a tempo*.

Staff 8: **FINALE**. Dynamics: *p*, *mf*. Tempo: *a tempo*, *poco rall. 1*.

Staff 9: *Furioso*. Dynamics: *p*, *mf*, *f*. Tempo: *a tempo*.

Staff 10: *Tempo I*. Dynamics: *f*, *p*. Tempo: *Tempo I*.

Staff 11: Dynamics: *mf*, *p*. Tempo: *poco rall. 1*, *a tempo*.

Staff 12: Dynamics: *mf*, *p*. Tempo: *a tempo*, *meno mosso*.

VALSE ELAINE

(HESITATION)

BARITONE 

LIONEL BAXTER.

INTRO.

Mod'to, cantabile.



con amore.



poco rall.

VALSE.



con amore.



poco rall.

a tempo.



a tempo.

mf

f poco rall.

p

Furioso.



f



rit.

p

Tempo I.



con amore.

mf



poco rall.

a tempo.

p



mf

f poco rall.

p

a tempo.

Cantabile.

p *mf*

p *p*

mf *p*

1 2

FINALE.

p con amore. *mf*

poco rall. *a tempo.*

mf *f poco rall.* *p*

a tempo.

Furioso.

f

1 2 *rit.*

p

Tempo I.

p con amore. *mf*

poco rall. *a tempo.*

a tempo. *meno mosso.*

p *p SOLO.* *mf* *f poco rall.* *dim.* *pp*

2

VALSE ELAINE

(HESITATION)

BARITONE.

LIONEL BAXTER.

INTRO.

Mod'to, cantabile.



VALSE.

p con amore.



Furioso.



Tempo I.

p con amore.



Cantabile.

Three staves of musical notation in bass clef. The first staff begins with a double bar line and a repeat sign. Dynamics include *p* and *mf*. The second staff has *p* dynamics. The third staff has *mf* and *p* dynamics, ending with first and second endings.

FINALE.

Three staves of musical notation in bass clef. The first staff is marked *p con amore.* and *mf*. The second staff has *a tempo.*, *poco rall.*, and *p* dynamics. The third staff has *mf*, *f poco rall.*, and *p* dynamics, with *a tempo.* markings.

Furioso.

Two staves of musical notation in bass clef. The first staff begins with a forte *f* dynamic. The second staff has first and second endings, followed by a *p* dynamic and a *rit.* marking.

Tempo I.

Three staves of musical notation in bass clef. The first staff is marked *p con amore.* and *mf*. The second staff has *a tempo.*, *poco rall.*, *p*, and *f poco rall.* dynamics. The third staff has *a tempo.*, *meno mosso.*, *p*, *p SOLO.*, and *pp* dynamics, with first and second endings.

VALSE ELAINE

(HESITATION)

E♭ BASSES.

LIONEL BAXTER.

INTRO.

Mod'to, cantabile.

p con amore.

mf poco rall.

VALSE.

p con amore.

mf poco rall. a tempo.

a tempo. 1

mf *f* poco rall. *p*

Furiso.

f

1 rit.

Tempo I.

p con amore.

mf poco rall. a tempo.

a tempo. 1

Cantabile.

p *mf*

FINALE.

p *con amore.* *mf*

poco rall. *a tempo.*

Furiso.

mf *f* *poco rall.* *a tempo.*

Tempo I.

p *con amore.* *mf*

poco rall. *a tempo.*

a tempo. *meno mosso.*

DRUMS.

VALSE ELAINE

LIONEL BAXTER.

INTRO.

(HESITATION)

Mod'to, cantabile.

16 VALSE. 24 1 4

BELLS. *p con amore.*

f *poco rall.* *a tempo.*

f *Furioso.* *Tempo I.*

p *rit.* *p con amore.*

f *poco rall.* *a tempo.*

p *Cantabile.* *BELLS.*

mf *p* *p*

Finale. *BELLS.* *p con amore.*

poco rall. *a tempo.* *poco rall.*

f *Furioso.* *Tempo I.*

p *rit.* *p con amore.*

mf *poco rall.* *a tempo.*

mf *f* *p* *a tempo.* 12