

RENDEZVOUS.

Valse.

ON VICTOR LEANDER'S POPULAR SONG.

PEDRO de ZULUETA.

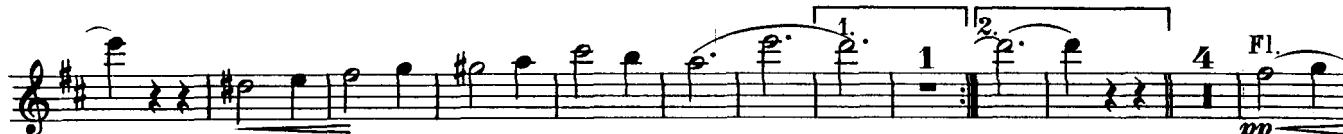
INTRO.
Moderato.

unis



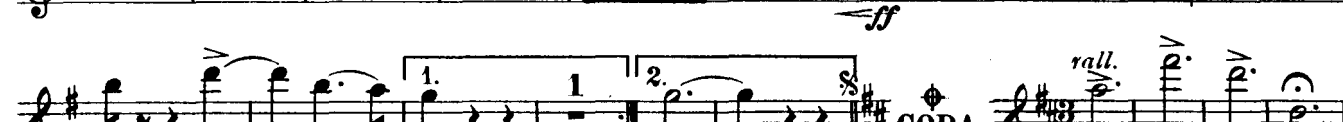
Tempo di Valse.

1st time Flute 2nd time Fl. & Picc.



TRIO.
Con brio. 9

mf



D.C.

CODA.

rall.

ff

ff

Fine.

ff Fine.

RENDEZVOUS.

Valse.

ON VICTOR LEANDER'S POPULAR SONG.

PEDRO de ZULUETA.

INTRO.
Moderato

Tempo di Valse.

TRIO.
Con brio. 1

Copyright, MCMX, by Chappell & Co. Ltd. for Great Britain the Colonies and the United States of America.
For all other Countries Virgil-Verlag, Berlin-Charlottenburg.

THE ADAPTATION OF THIS COMPOSITION TO ANY FORM OF MECHANICAL MUSICAL INSTRUMENT, EITHER FOR PRIVATE OR PUBLIC PERFORMANCE IS STRICTLY PROHIBITED.

RENDEZVOUS.

Valse.

ON VICTOR LEANDER'S POPULAR SONG.

PEDRO de ZULUETA.

INTRO.
Moderato.

8 *f* *rit.*

Tempo di Valse.

4 *p repeat f*

1. 2.

4 *pp* 7 *f*

4 *p* *tr*

ff

to Coda *ff*

TRIO.
Con brio. 9

mf *f*

ff

1. 1. 2. *D.C.* CODA. *ff* *rall.* *rit.* *rit.* *rit.* *ff* *Fine.*

Copyright, MCMX, by Chappell & Co Ltd. for Great Britain the Colonies and the United States of America.
For all other Countries Virgil-Verlag, Berlin-Charlottenburg.

(494.)

THE ADAPTATION OF THIS COMPOSITION TO ANY FORM OF MECHANICAL MUSICAL INSTRUMENT, EITHER FOR PRIVATE OR PUBLIC PERFORMANCE IS STRICTLY PROHIBITED.

RENDEZVOUS.

Valse.

ON VICTOR LEANDER'S POPULAR SONG.

PEDRO de ZULUETA.

INTRO.
Moderato.



Tempo di Valse.



TRIO.
Con brio.



Copyright, MCMX, by Chappell & Co Ltd. for Great Britain the Colonies and the United States of America.

For all other Countries Virgll-Verlag, Berlin- Charlottenburg.

(494)

THE ADAPTATION OF THIS COMPOSITION TO ANY FORM OF MECHANICAL MUSICAL INSTRUMENT, EITHER FOR PRIVATE OR PUBLIC PERFORMANCE IS STRICTLY PROHIBITED;

RENDEZVOUS.

Valse.

ON VICTOR LEANDER'S POPULAR SONG.

PEDRO de ZULUETA.

Arranged for Military Band by
DAN GODFREY. HON. R.A.M.

INTRO.

Moderato.

TRIO.

Con brio.

Rep. Cl.

CODA.

ff rall.

ff $\frac{1}{2}$ Fine.

Copyright, MCMX, by Chappell & C^o Ltd. for Great Britain the Colonies and the United States of America.

For all other Countries Virgil-Verlag, Berlin-Charlottenburg.

(494.)

THE ADAPTATION OF THIS COMPOSITION TO ANY FORM OF MECHANICAL MUSICAL INSTRUMENT, EITHER FOR PRIVATE OR PUBLIC PERFORMANCE IS STRICTLY PROHIBITED.

RENDEZVOUS.

Valse.

ON VICTOR LEANDER'S POPULAR SONG.

PEDRO de ZULUETA.

Arranged for Military Band by
DAN GODFREY. HON. R.A.M.

INTRO.
Moderato.

Tempo di Valse.

Barit. & Euph.

Barit.

pp

to Coda.

TRIO.
Con brio.

Rep. Cl.

CODA.

ff rall.

ff $\frac{1}{2}$
Fine.

Copyright, MCMX, by Chappell & Co. Ltd. for Great Britain the Colonies and the United States of America.

For all other Countries Virgil-Verlag, Berlin-Charlottenburg.

(494.)

THE ADAPTATION OF THIS COMPOSITION TO ANY FORM OF MECHANICAL MUSICAL INSTRUMENT, EITHER FOR PRIVATE OR PUBLIC PERFORMANCE IS STRICTLY PROHIBITED.

RENDEZVOUS.

Valse.

ON VICTOR LEANDER'S POPULAR SONG.

PEDRO de ZULUETA.

INTRO.
Moderato

1 1

p *f* *molto rit. e dim.*

Tempo di Valse.

p repeat f

3 4 5 6

1. 2.

pp

f

2 3 4 5 6

p

ff

to Coda

ff

TRIO.
Con brio.

mf

f *ff*

1. 2.

f *ff* *rall.* *ff* *ff*

CODA. D.C.

Copyright, MCMX, by Chappell & Co Ltd. for Great Britain the Colonies and the United States of America.
For all other Countries Virgil-Verlag, Berlin- Charlottenburg.

Fine.
(494)

RENDEZVOUS.

Valse.

ON VICTOR LEANDER'S POPULAR SONG.

PEDRO de ZULUETA.

INTRO.
Moderato.

The Intro section consists of ten staves of music. It begins with a treble clef, a key signature of two flats (B \flat and E \flat), and a 4/4 time signature. The tempo is marked 'Moderato'. The first staff has a first ending bracket over the final two measures. The second staff includes the instruction '% Tempo di Valse.' and 'molto rit. e dim.' followed by a repeat sign and 'p repeat f'. The third staff continues the melodic line. The fourth staff has a first ending bracket over the final two measures, with a second ending bracket below it. The fifth staff continues the melody. The sixth staff has a first ending bracket over the final two measures. The seventh staff continues the melody. The eighth staff has a first ending bracket over the final two measures. The ninth staff continues the melody. The tenth staff ends with a double bar line and the instruction 'to Coda' with a diamond symbol.

TRIO.
Con brio.

The Trio section consists of three staves of music. It begins with a treble clef, a key signature of two flats, and a 4/4 time signature. The tempo is marked 'Con brio'. The first staff starts with a first ending bracket over the final two measures. The second staff continues the melody. The third staff has a first ending bracket over the final two measures. The section concludes with a double bar line and the instruction 'D.C.' (Da Capo).

CODA.

The Coda section consists of one staff of music. It begins with a treble clef, a key signature of two flats, and a 4/4 time signature. The tempo is marked 'rall.' (rallentando). The section concludes with a double bar line and the instruction 'ff Fine.' (fortissimo Fine).

Copyright, MCMX, by Chappell & Co Ltd. for Great Britain the Colonies and the United States of America.

For all other Countries Virgil-Verlag, Berlin- Charlottenburg.

ff³ Fine.
(494)

RENDEZVOUS.

Valse.

ON VICTOR LEANDER'S POPULAR SONG.

PEDRO de ZULUETA.

INTRO.
Moderato.

TRIO.
Con brio.

Copyright, MCMX, by Chappell & Co Ltd. for Great Britain the Colonies and the United States of America.

For all other Countries Virgil-Verlag, Berlin- Charlottenburg.

(494.)

THE ADAPTATION OF THIS COMPOSITION TO ANY FORM OF MECHANICAL MUSICAL INSTRUMENT, EITHER FOR PRIVATE OR PUBLIC PERFORMANCE IS STRICTLY PROHIBITED.

RENDEZVOUS.

Valse.

ON VICTOR LEANDER'S POPULAR SONG.

PEDRO de ZULUETA.

INTRO.
Moderato.

p *f* *dim. e rit molto*

Tempo di Valse.

p repeat f

p

pp

f

p

ff

ff to Coda.

TRIO.
Con brio.

mf

f *ff*

f *D.C.* CODA. *ff rall.* *Fine.*

Copyright, MCMX, by Chappell & Co Ltd. for Great Britain the Colonies and the United States of America.
For all other Countries Virgil-Verlag, Berlin-Charlottenburg.

(494)

THE ADAPTATION OF THIS COMPOSITION TO ANY FORM OF MECHANICAL MUSICAL INSTRUMENT, EITHER FOR PRIVATE OR PUBLIC PERFORMANCE IS STRICTLY PROHIBITED.

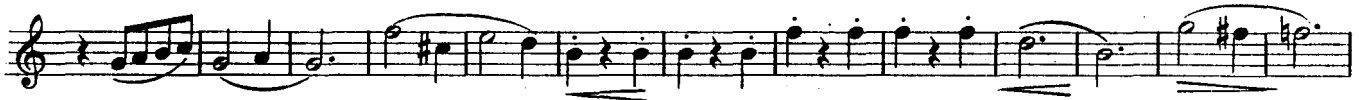
RENDEZVOUS.

Valse.

ON VICTOR LEANDER'S POPULAR SONG.

PEDRO de ZULUETA.

INTRO.
Moderato.



TRIO.
Con brio.



RENDEZVOUS.

Valse.

ON VICTOR LEANDER'S POPULAR SONG.

PEDRO de ZULUETA.

INTRO.
Moderato.



TRIO.
Con brio.



RENDEZVOUS.

Valse.

ON VICTOR LEANDER'S POPULAR SONG.

PEDRO de ZULUETA.

INTRO.
Moderato.

Tempo di Valse.

TRIO.
Con brio.

RENDEZVOUS. Valse.

ON VICTOR LEANDER'S POPULAR SONG.

INTRO.
Moderato.

PEDRO de ZULUETA.

Tempo di Valse.

mf (play repeat only)

to Coda.

TRIO.
Con brio.

ff Fine.
(494)

Copyright, MCMX, by Chappell & Co Ltd. for Great Britain the Colonies and the United States of America.

For all other Countries Virgil-Verlag, Berlin- Charlottenburg.

THE ADAPTATION OF THIS COMPOSITION TO ANY FORM OF MECHANICAL MUSICAL INSTRUMENT, EITHER FOR PRIVATE OR PUBLIC PERFORMANCE IS STRICTLY PROHIBITED

E♭ TRUMPETS.

RENDEZVOUS.

Valse.

ON VICTOR LEANDER'S POPULAR SONG.

PEDRO de ZULUETA.

INTRO.
Moderato.

8 1 2
molto rit.

Tempo di Valse.

mf (play repeat only.)

1. 2. 16

8

to Coda

TRIO.
Con brio.

6 8

ff

1. 1. 2. D.C. CODA. *rall.* *ff*

ff Fine.

Copyright, MCMX, by Chappell & Co. Ltd. for Great Britain the Colonies and the United States of America.
For all other Countries Virgil-Verlag, Berlin- Charlottenburg.

(494)

THE ADAPTATION OF THIS COMPOSITION TO ANY FORM OF MECHANICAL MUSICAL INSTRUMENT, EITHER FOR PRIVATE OR PUBLIC PERFORMANCE IS STRICTLY PROHIBITED.

RENDEZVOUS. Valse.

ON VICTOR LEANDER'S POPULAR SONG.

PEDRO de ZULUETA.

INTRO.
Moderato.

§ Tempo di Valse.

TRIO.
Con brio.

RENDEZVOUS. Valse.

ON VICTOR LEANDER'S POPULAR SONG.

PEDRO de ZULUETA.

INTRO.
Moderato

TRIO.
Con brio.

RENDEZVOUS. Valse.

ON VICTOR LEANDER'S POPULAR SONG.

INTRO.

PEDRO de ZULUETA.

Moderato.

Tempo di Valse.

TRIO.

Con brio.

Copyright, MCMX, by Chappell & Co Ltd. for Great Britain the Colonies and the United States of America.

For all other Countries Virgil-Verlag, Berlin-Charlottenburg.

(494.)

THE ADAPTATION OF THIS COMPOSITION TO ANY FORM OF MECHANICAL MUSICAL INSTRUMENT, EITHER FOR PRIVATE OR PUBLIC PERFORMANCE IS STRICTLY PROHIBITED.

RENDEZVOUS.

Valse.

ON VICTOR LEANDER'S POPULAR SONG.

INTRO.
Moderato.

PEDRO de ZULUETA.

4 1 2

p *cresc.* *f* *molto rit.*

Tempo di Valse.

mf (play repeat only)

1. 2. 2.

6 8 *p* *f*

8 *p* *ff*

to Coda. *ff*

TRIO.
Con brio

p

f

ff

1. 2. §

D.C. CODA. *ff* *rall.* *ff* Fine.

Copyright, MCMX, by Chappell & Co. Ltd. for Great Britain the Colonies and the United States of America.

For all other Countries Virgil-Verlag, Berlin-Charlottenburg.

(494)

THE ADAPTATION OF THIS COMPOSITION TO ANY FORM OF MECHANICAL MUSICAL INSTRUMENT, EITHER FOR PRIVATE OR PUBLIC PERFORMANCE IS STRICTLY PROHIBITED.

RENDEZVOUS.

Valse.

ON VÍCTOR LEANDER'S POPULAR SONG.

INTRO.
Moderato.

PEDRO de ZULUETA.

Tempo di Valse.

TRIO.
Con brio.

Copyright, MCMX, by Chappell & Co. Ltd. for Great Britain the Colonies and the United States of America.

For all other Countries Virgil-Verlag, Berlin-Charlottenburg.

THE ADAPTATION OF THIS COMPOSITION TO ANY FORM OF MECHANICAL MUSICAL INSTRUMENT, EITHER FOR PRIVATE OR PUBLIC PERFORMANCE IS STRICTLY PROHIBITED.

RENDEZVOUS.

Valse.

ON VICTOR LEANDER'S POPULAR SONG.

INTRO.
Moderato.

PEDRO de ZULUETA.

The Intro section consists of ten staves of music. It begins with a treble clef, a key signature of one flat (B \flat), and a 3/4 time signature. The tempo is marked 'Moderato'. The first staff starts with a piano (*p*) dynamic and ends with a forte (*f*) dynamic. The second staff is marked '% Tempo di Valse.' and includes dynamics 'molto rit. e dim.' and 'p repeat f'. The third staff has a first ending bracket and a piano-piano (*pp*) dynamic. The fourth staff ends with a forte (*f*) dynamic. The fifth staff starts with a piano (*p*) dynamic. The sixth staff ends with a fortissimo (*ff*) dynamic. The seventh staff is marked 'to Coda'. The eighth staff ends with a fortissimo (*ff*) dynamic.

TRIO.
Con brio.

The Trio section consists of three staves of music. It begins with a treble clef, a key signature of two flats (B \flat , E \flat), and a 3/4 time signature. The tempo is marked 'Con brio'. The first staff starts with a mezzo-forte (*mf*) dynamic. The second staff ends with a fortissimo (*ff*) dynamic. The third staff has a first ending bracket and a fortissimo (*f*) dynamic. The Coda section consists of one staff of music, marked 'CODA.' and 'D. C.', starting with a fortissimo (*ff*) dynamic and ending with 'rall.' and 'ff Fine'.

RENDEZVOUS.

Valse.

ON VICTOR LEANDER'S POPULAR SONG.

PEDRO de ZULUETA.

INTRO.
Moderato.

TRIO.
Con brio.

Copyright, MCMX, by Chappell & Co Ltd. for Great Britain the Colonies and the United States of America.

For all other Countries Virgil-Verlag, Berlin-Charlottenburg.

(494.)

RENDEZVOUS.

Valse.

ON VICTOR LEANDER'S POPULAR SONG.

PEDRO de ZULUETA.

INTRO.
Moderato.

1. *p* *cresc.* *f* *rit. molto* 2.

Tempo di Valse.

p repeat *f*

1. 1. 2. *pp*

f

p

ff

to Coda. *ff*

TRIO.
Con brio

mf

f *ff*

1. 2. *f* *D.C.* *ff* *rall.* *ff* *Fine.*

CODA.

RENDEZVOUS.

Valse.

ON VICTOR LEANDER'S POPULAR SONG.

PEDRO de ZULUETA.

INTRO.
Moderato.

3 3 2

p B. D. *mf* (Both) *rit. molto*

Tempo di Valse.

mf (play repeat only.)

1. 2. 6 *p*

8 *f* 8 *p*

ff

to Coda. *ff*

TRIO.

Con brio.

mf Tri. 1 1

S. D. 1 *mf* *mf* *f*

ff

1. 2. CODA. *ff* rall. *Fine.*

D. C.