

Alto Saxophone Solo

# Melodie, Op.42

Alto Sax Solo and Band

P.I. Tchaikovsky  
arr. Alexander Glasunov  
Setting for Band - Bill Park

Moderato con moto ♩ = 98

3

4

5

6

mf

7

8

9

10

11

p mf

12

13

14

15

16

17

18

19

20

p mf

21

22

23

24

25

26

27

28

29

30

31

32

p

Alto Saxophone Solo

Melodie, Op.42

- 2 -

33 34 35 36 37 38 39 40

*ff*

41 42 43 44 45 46 47

*mf p f*

48 49 50 51 52 53 54

*ritenuto* **Tempo 1.**

*mf*

55 56 57 58 59

*p mf*

60 61 62 63 64 65 66 67

*f*

68 69 70 71 72 73 74 75

*p*

76 77 78 79 80 81 82

*pp*

# Melodie, Op 42, No. 3

Flute 1

P.I Tchaikovsky  
Arr. Bill Park

Moderato con moto ♩ = 80

10

pp pp

3

Detailed description: This staff contains measures 10 through 23. It begins with a piano (*pp*) dynamic. A triplet of eighth notes is marked with a '3' above it. The melody continues with various rhythmic patterns and dynamics, including another *pp* marking.

24

p

7

Detailed description: This staff contains measures 24 through 34. It starts with a piano (*p*) dynamic. A septuplet of eighth notes is marked with a '7' above it. The piece concludes this section with a *p* dynamic.

35

p

4

Detailed description: This staff contains measures 35 through 40. It begins with a piano (*p*) dynamic. A quartuplet of eighth notes is marked with a '4' above it. The melody features sixteenth-note patterns.

41

mf

Detailed description: This staff contains measures 41 through 48. The dynamic is mezzo-forte (*mf*). The melody consists of sixteenth-note runs.

49

f mf

2

Detailed description: This staff contains measures 49 through 58. It starts with a forte (*f*) dynamic, then moves to mezzo-forte (*mf*). A double bar line with a '2' above it indicates a repeat or a specific articulation.

59

p mf f > ritenuito

Moderato con moto ♩ = 80  
dolce

Detailed description: This staff contains measures 59 through 67. Dynamics range from piano (*p*) to forte (*f*). A *ritenuito* (ritardando) marking is present. The tempo is *Moderato con moto* (♩ = 80) and the character is *dolce* (sweet).

68

p p mf

Detailed description: This staff contains measures 68 through 77. Dynamics include piano (*p*) and mezzo-forte (*mf*). The melody features sixteenth-note patterns.

78

p

2

Detailed description: This staff contains measures 78 through 87. It begins with a piano (*p*) dynamic. A double bar line with a '2' above it is present. The piece ends with a piano (*p*) dynamic.

p pp pp

Detailed description: This staff contains measures 88 through 95. Dynamics range from piano (*p*) to pianissimo (*pp*). The piece concludes with a final *pp* dynamic.

# Melodie, Op 42, No. 3

Flute 2

P.I. Tchaikovsky  
Arr. Bill Park

Moderato con moto ♩ = 80

1 *pp* 3 *pp*

10 *p*

24 *p* 4

35 *mf* *f*

42 *mf* 2 *p*

50 *mf* *f* *ritenuto* Moderato con moto ♩ = 80 *dolce*

57 *p* *p*

64 *mf*

71 2 *p*

79 *p* *pp* *pp*

# Melodie, Op 42, No. 3

Oboe

P.I Tchaikovsky  
Arr. Bill Park

Moderato con moto ♩ = 80

3

pp

pp

10

7

p

24

4

p

35

mf

f

42

mf

p

cresc.

51

Moderato con moto ♩ = 80

mf

ritenuto

p

60

mp

69

2

p

79

2

p

pp

# Melodie, Op 42, No. 3

B $\flat$  Clarinet 1

P.I Tchaikovsky  
Arr. Bill Park

Moderato con moto ♩ = 80

1

pp pp

10

7

f p

24

p cresc. mf p

33

f mf pp cresc. mf

41

f mf p

48

Moderato con moto ♩ = 80  
dolce

p cresc. mf ritenuto p

57

p p mp

67

p mf pp p

77

p pp pp

# Melodie, Op 42, No. 3

B $\flat$  Clarinet 2

P.I Tchaikovsky  
Arr. Bill Park

Moderato con moto ♩ = 80

1 *pp* 3 *pp*

10 *mf* *p*

24 *p* *mf* *p*

32 *f* *mf* *pp*

39 *mf* *f* *mf*

47 Moderato con moto ♩ = 80  
*p* *p* *cresc.* *f* *ritenuto* *pp* *dolce*

57 *mp*

66 *pp* 2

77 *p* *pp* *pp*

# Melodie, Op 42, No. 3

B $\flat$  Clarinet 3

P.I Tchaikovsky  
Arr. Bill Park

Moderato con moto  $\text{♩} = 80$

10

24

32

40

47

54

69

78



# Melodie, Op 42, No. 3

Bass Clarinet

P.I. Tschaikovsky  
Arr. Bill Park

Moderato con moto ♩ = 80

10

24

32

39

47

54 Moderato con moto ♩ = 80

63

78

# Melodie, Op 42, No. 3

Bassoon

P.I Tchaikovsky  
Arr. Bill Park

Moderato con moto ♩ = 80

3

*pp* *pp*

13

*p* *mf*

23

*p* *p cresc.* *mf* *p*

33

*cresc.* *mf* *f*

42

*mf* *p* *cresc.*

50

Moderato con moto ♩ = 80

*mf* *ritenuito* *pp*

59

*mf*

68

2

*pp*

78

*p* *pp* *pp*

# Melodie, Op 42, No. 3

Alto Saxophone

P.I. Tschaikovsky

Arr. Bill Park

Moderato con moto ♩ = 80

8

16

24 *2* *div. unis* *2*

34 *div. unis* *mf* *f* *div.*

44 *unis* *mf* *mp* *p* *p* *f*

52 *Moderato con moto* ♩ = 80 *ritenuato* *p*

60 *pp*

69 *p* *mf* *pp*

78 *pp* *3* *pp*

Dedicated to Erica Zappia, Violist • Strongsville, Ohio

# Melodie, Op 42, No. 3

Tenor Sax

P.I Tchaikovsky

Orchestration - A Glazounov, Arr. Bill Park

Moderato con moto ♩ = 80

*p* *pp*

9 *p*

24 *p*

35 *pp* *mf* *f*

43 *mf* *mp* *mp*

50 *mf* *ritenuto* *p*

59 *mf*

67 *pp*

77 *pp* *pp*

*rit.*

Dedicated to Erica Zappia, Violist • Strongsville, Ohio

# Melodie, Op 42, No. 3

Baritone Sax

P.I. Tschaikovsky

Orchestration - A Glazounov, Arr. Bill Park

Moderato con moto ♩ = 80

11

32

40

48

58

66

76

*pp*

*pp*

*p*

*p*

*pp*

*mf*

*p*

*mp*

*p*

*p*

*pp*

*p*

*pp*

*pp*

*rit.*

*p*

*pp*

*pp*

# Melodie, Op 42, No. 3

Trumpet 1

P.I Tchaikovsky  
Arr. Bill Park

Moderato con moto ♩ = 80

*p* cup mute *pp*

8

16

24

34

45

*mf* *mf* *ritenuto*

54 Moderato con moto ♩ = 80

61

68

*mf* *p* *mf* *pp*

76

6

*pp*

# Melodie, Op 42, No. 3

Trumpet 2

P.I Tchaikovsky

Arr. Bill Park

Moderato con moto ♩ = 80

*p* cup mute *pp*

8 *p*

16 *p*

24 2 2

34 3 open play into stand

44 2 *mf* *mp* *f*

52 Moderato con moto ♩ = 80 *ritenuto* *p*

59 *p*

66 *mp* *mf* *p*

74 *mf* *pp* 6 *pp*

# Melodie, Op 42, No. 3

Trumpet 3

P.I Tchaikovsky  
Arr. Bill Park

Moderato con moto ♩ = 80

*p* *cup mute* *pp*

8 *p*

16 *p*

24 *3* *3*

36 *5* *open play into stand* *f* *mf* *mf* *3*

52 *Moderato con moto ♩ = 80* *ritenuto* *p*

60 *p*

68 *mp* *mf* *pp* *11*



# Melodie, Op 42, No. 3

F Horn 1

P.I Tchaikovsky  
Arr. Bill Park

Moderato con moto ♩ = 80

8

17

28

37

45

53

61

70

78

# Melodie, Op 42, No. 3

F Horn 2

P.I Tchaikovsky  
Arr. Bill Park

Moderato con moto ♩ = 80

9

18

29

39

51

59

67

76

*p*

*p*

*p*

*p cresc.*

*mf*

*pp*

*mf*

*f*

*mf*

Moderato con moto ♩ = 80

*ritenuto*

*p*

*p*

*pp*

*pp*

# Melodie, Op 42, No. 3

Trombone 1

P.I Tchaikovsky  
Arr. Bill Park

Moderato con moto ♩ = 80

5

*pp* cup mute *p*

15

23

*p* *p*

33

open - play into stand

*pp* *mf* *f*

42

*mf*

54

Moderato con moto ♩ = 80

*p*

65

75

*pp*

# Melodie, Op 42, No. 3

Trombone 2

P.I Tchaikovsky  
Arr. Bill Park

Moderato con moto ♩ = 80

*pp* cup mute *p*

15

23

*p* *p*

33

open - play into stand  
*pp* *mf* *f*

42

*mf*

54

Moderato con moto ♩ = 80  
*p*

65

*p*

75

*pp*

# Melodie, Op 42, No. 3

Trombone 3

P.I Tchaikovsky  
Arr. Bill Park

Moderato con moto ♩ = 80

9

19

28

37

47

57

65

74

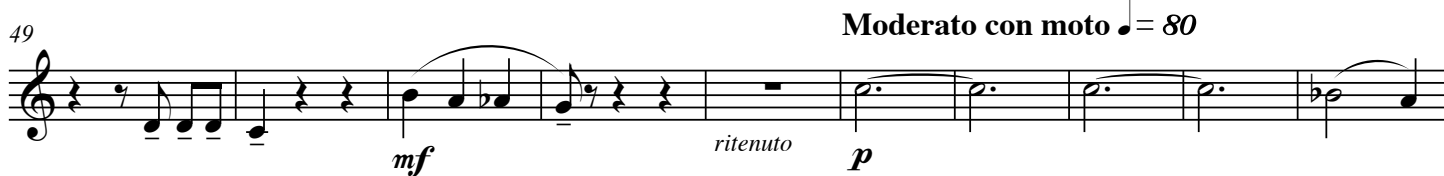
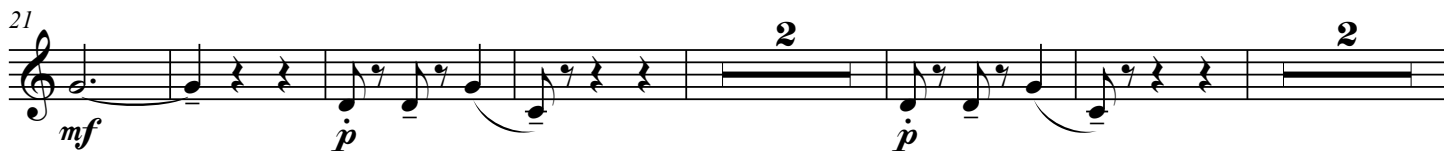
*p* *pp* *p* *p* *mf* *f* *mf* *f* *Moderato con moto* ♩ = 80 *p* *p* *pp*

# Melodie, Op 42, No. 3

Euphonium TC

P.I. Tschaikovsky  
Arr. Bill Park

Moderato con moto ♩ = 80



# Melodie, Op 42, No. 3

Euphonium

P.I. Tschaikovsky  
Arr. Bill Park

Moderato con moto ♩ = 80

*pp*

11 *p*

21 *mf* *p* *p*

31

39 *f* *mf* *mp* *p*

48 *mf* *ritenuto* *p* Moderato con moto ♩ = 80

58 *p*

68 *f* *mf* *p* *mf* *pp* *pp*

77 *p* *pp* 6

# Melodie, Op 42, No. 3

Tuba

P.I Tchaikovsky  
Arr. Bill Park

Moderato con moto ♩ = 80

9

18

27

36

48

57

65

75

*p* *pp* *p* *f* *p* *Moderato con moto* ♩ = 80 *ritenuto* *p* *f* *mf* *mf* *pp* *pp*



# Melodie, Op 42, No. 3

Mallets

P.I Tchaikovsky

Triangle, Bells

Arr. Bill Park

Moderato con moto ♩ = 80

1

40

Triangle

47

Bells

12

*f*

*mf*

65

3

74

2

82

# Melodie, Op 42, No. 3

## Percussion

Triangle, Bass Drum, Susp. Cymbals

P.I Tchaikovsky

Arr. Bill Park

**Moderato con moto** ♩ = 80

Triangle Bass Drum

**p** 1 2 3 4 5 14 15 16 17

9

Cym roll, soft mallets Triangle

18 19 20 21 22 23 24 25

2 2 2

27 28 29 31 32 33 35

Cym roll, soft mallets

2 2 2

36 37 39 40 41 42 43 44 45

**Moderato con moto** ♩ = 80

6

46 47 48 54 55

7

56 57 58 59 60 61 62

2 12

69 70 71 72 74 75