

KRUPP ARTILLERY MARCH

(1881)

Piccolo

THEODORE ASHERFELD

INTRODUCTION



MARCH



TRIO



FINALE



KRUPP ARTILLERY MARCH

Flute

(1881)

THEODORE ASHERFELD

INTRODUCTION

Musical notation for the Introduction section, starting with a treble clef, a key signature of one flat, and a common time signature. The melody begins with a quarter rest followed by a series of eighth and sixteenth notes, ending with a half note G4.

MARCH

Musical notation for the first part of the March section, starting at measure 10. It features a treble clef, one flat key signature, and common time. The melody is marked with a forte (*f*) dynamic.

Musical notation for the second part of the March section, starting at measure 17. It continues the melody with various rhythmic patterns and a triplet at the end.

Musical notation for the third part of the March section, starting at measure 25. The melody is marked with a mezzo-forte (*mf*) dynamic.

Musical notation for the fourth part of the March section, starting at measure 33. It includes dynamic markings of forte (*f*) and mezzo-forte (*mf*).

Musical notation for the beginning of the Trio section, starting at measure 42. It features a treble clef, one flat key signature, and common time. The melody is marked with a piano (*p*) dynamic.

Musical notation for the middle part of the Trio section, starting at measure 50. It includes dynamic markings of piano (*p*) and forte (*f*).

FINALE

Musical notation for the first part of the Finale section, starting at measure 58. It features a treble clef, one flat key signature, and common time. The melody is marked with a fortissimo (*ff*) dynamic.

Musical notation for the second part of the Finale section, starting at measure 65. It continues the fortissimo (*ff*) melody.

Musical notation for the final part of the Finale section, starting at measure 73. It concludes with a fortissimo (*ff*) dynamic and a fermata.

KRUPP ARTILLERY MARCH

(1881)

THEODORE ASHERFELD

Oboe

INTRODUCTION

f

MARCH

10

f

17

3

25

mf

33

f *mf* *f*

TRIO

42

p

50

f

FINALE

58

ff

65

ff

73

ff

KRUPP ARTILLERY MARCH

(1881)

Bassoon

THEODORE ASHERFELD

INTRODUCTION



f

10 MARCH



f

17



25



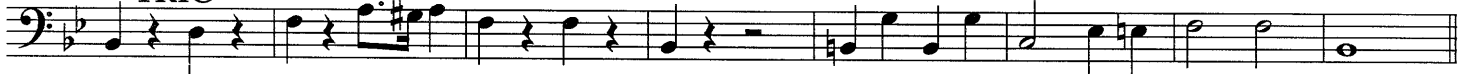
33



f

42

TRIO



p

50



58 FINALE



ff

65



73



ff

KRUPP ARTILLERY MARCH

E-Flat Clarinet

(1881)

THEODORE ASHERFELD

INTRODUCTION

Musical notation for the Introduction section, measures 1-9. The key signature is one sharp (F#) and the time signature is common time (C). The music begins with a rest, followed by a series of eighth and sixteenth notes, and ends with a half note G4. A dynamic marking of *f* is placed below the first measure.

MARCH

Musical notation for the March section, measures 10-16. The music continues with eighth and sixteenth notes. A dynamic marking of *f* is placed below the first measure.

Musical notation for the March section, measures 17-24. The music continues with eighth and sixteenth notes. A dynamic marking of *f* is placed below the first measure.

Musical notation for the March section, measures 25-32. The music continues with eighth and sixteenth notes. A dynamic marking of *f* is placed below the first measure.

Musical notation for the March section, measures 33-41. The music continues with eighth and sixteenth notes. A dynamic marking of *f* is placed below the first measure.

TRIO

Musical notation for the Trio section, measures 42-49. The music features a more melodic line with quarter and eighth notes. A dynamic marking of *p* is placed below the first measure.

Musical notation for the Trio section, measures 50-57. The music continues with a melodic line. A dynamic marking of *p* is placed below the first measure.

FINALE

Musical notation for the Finale section, measures 58-64. The music features a rhythmic pattern of eighth notes. A dynamic marking of *ff* is placed below the first measure.

Musical notation for the Finale section, measures 65-72. The music continues with a rhythmic pattern of eighth notes. A dynamic marking of *ff* is placed below the first measure.

Musical notation for the Finale section, measures 73-79. The music concludes with a series of eighth notes and a final half note G4. A dynamic marking of *ff* is placed below the first measure.

KRUPP ARTILLERY MARCH

(1881)

Clarinet 1

THEODORE ASHERFELD

INTRODUCTION

Musical notation for the Introduction section, measures 1-9. The key signature is one sharp (F#) and the time signature is common time (C). The music begins with a rest, followed by a series of eighth and sixteenth notes, leading to a triplet of eighth notes.

MARCH

f

Musical notation for the March section, measures 10-16. The music continues with eighth and sixteenth notes, maintaining a steady rhythmic pattern.

Musical notation for the March section, measures 17-24. The music continues with eighth and sixteenth notes, ending with a triplet of eighth notes.

3

Musical notation for the March section, measures 25-32. The music continues with eighth and sixteenth notes, ending with a triplet of eighth notes.

mf

Musical notation for the March section, measures 33-41. The music continues with eighth and sixteenth notes, ending with a triplet of eighth notes.

f

mf

f

TRIO

Musical notation for the Trio section, measures 42-49. The music begins with a rest, followed by a series of eighth and sixteenth notes.

p

Musical notation for the Trio section, measures 50-57. The music continues with eighth and sixteenth notes.

f

FINALE

Musical notation for the Finale section, measures 58-64. The music begins with a rest, followed by a series of eighth and sixteenth notes.

ff

Musical notation for the Finale section, measures 65-72. The music continues with eighth and sixteenth notes.

Musical notation for the Finale section, measures 73-79. The music continues with eighth and sixteenth notes, ending with a triplet of eighth notes.

ff

KRUPP ARTILLERY MARCH

(1881)

THEODORE ASHERFELD

Clarinet 2

INTRODUCTION

Musical notation for the Introduction section, measures 1-9. The key signature is one sharp (F#), and the time signature is common time (C). The music begins with a rest, followed by a series of quarter notes: G4, A4, B4, C5, B4, A4, G4. A fermata is placed over the final G4. The dynamic marking is *f*. A repeat sign with a first ending bracket and a '4' above it is at the end of the line.

Musical notation for the March section, measures 10-16. The key signature is one sharp (F#). The music starts with a rest, followed by quarter notes: G4, A4, B4, C5, B4, A4, G4. The dynamic marking is *f*.

Musical notation for the March section, measures 17-24. The key signature is one sharp (F#). The music continues with quarter notes: G4, A4, B4, C5, B4, A4, G4. A triplet of eighth notes (G4, A4, B4) is marked with a '3' above it. The dynamic marking is *f*.

Musical notation for the March section, measures 25-32. The key signature is one sharp (F#). The music starts with a rest, followed by quarter notes: G4, A4, B4, C5, B4, A4, G4. The dynamic marking is *mf*.

Musical notation for the March section, measures 33-41. The key signature is one sharp (F#). The music starts with a rest, followed by quarter notes: G4, A4, B4, C5, B4, A4, G4. The dynamic marking is *f*. The key signature changes to natural (C) at the end of the line.

Musical notation for the Trio section, measures 42-49. The key signature is natural (C). The music starts with a rest, followed by quarter notes: G4, A4, B4, C5, B4, A4, G4. The dynamic marking is *p*.

Musical notation for the Trio section, measures 50-57. The key signature is natural (C). The music starts with a rest, followed by quarter notes: G4, A4, B4, C5, B4, A4, G4. The dynamic marking is *f*.

Musical notation for the Finale section, measures 58-64. The key signature is natural (C). The music starts with a rest, followed by quarter notes: G4, A4, B4, C5, B4, A4, G4. The dynamic marking is *ff*.

Musical notation for the Finale section, measures 65-72. The key signature is natural (C). The music starts with a rest, followed by quarter notes: G4, A4, B4, C5, B4, A4, G4. The dynamic marking is *ff*.

Musical notation for the Finale section, measures 73-79. The key signature is natural (C). The music starts with a rest, followed by quarter notes: G4, A4, B4, C5, B4, A4, G4. The dynamic marking is *ff*. A fermata is placed over the final G4.

KRUPP ARTILLERY MARCH

(1881)

Clarinet 3

THEODORE ASHERFELD

INTRODUCTION

Musical notation for the Introduction section, measures 1-9. The key signature is one sharp (F#) and the time signature is common time (C). The music begins with a whole rest, followed by a series of quarter notes and eighth notes. A dynamic marking of *f* (forte) is placed below the first measure. The section concludes with a final chord marked with a '4' above the staff.

Musical notation for the March section, measures 10-16. The key signature is one sharp (F#) and the time signature is common time (C). The music features a rhythmic pattern of quarter and eighth notes. A dynamic marking of *f* (forte) is placed below the first measure.

Musical notation for the March section, measures 17-24. The key signature is one sharp (F#) and the time signature is common time (C). The music continues with a rhythmic pattern of quarter and eighth notes.

Musical notation for the March section, measures 25-32. The key signature is one sharp (F#) and the time signature is common time (C). The music features a rhythmic pattern of quarter and eighth notes. A dynamic marking of *mf* (mezzo-forte) is placed below the first measure.

Musical notation for the March section, measures 33-41. The key signature is one sharp (F#) and the time signature is common time (C). The music features a rhythmic pattern of quarter and eighth notes. Dynamic markings of *f* (forte) and *mf* (mezzo-forte) are placed below the staff.

Musical notation for the Trio section, measures 42-49. The key signature is one sharp (F#) and the time signature is common time (C). The music features a rhythmic pattern of quarter and eighth notes. A dynamic marking of *p* (piano) is placed below the first measure.

Musical notation for the Trio section, measures 50-57. The key signature is one sharp (F#) and the time signature is common time (C). The music features a rhythmic pattern of quarter and eighth notes. A dynamic marking of *f* (forte) is placed below the first measure.

Musical notation for the Finale section, measures 58-64. The key signature is one sharp (F#) and the time signature is common time (C). The music features a rhythmic pattern of quarter and eighth notes. A dynamic marking of *ff* (fortissimo) is placed below the first measure.

Musical notation for the Finale section, measures 65-72. The key signature is one sharp (F#) and the time signature is common time (C). The music features a rhythmic pattern of quarter and eighth notes.

Musical notation for the Finale section, measures 73-79. The key signature is one sharp (F#) and the time signature is common time (C). The music features a rhythmic pattern of quarter and eighth notes. A dynamic marking of *ff* (fortissimo) is placed below the final measure.

KRUPP ARTILLERY MARCH

(1881)

Bass Clarinet

THEODORE ASHERFELD

INTRODUCTION

f

10 MARCH

f

17

25

mf

33

f *mf*

42 TRIO

p

50

f

58 FINALE

ff

65

73

ff

KRUPP ARTILLERY MARCH

(1881)

Alto Saxophone 1

THEODORE ASHERFELD

INTRODUCTION

Musical notation for the Introduction section, measures 1-9. The key signature is one sharp (F#) and the time signature is common time (C). The music begins with a rest, followed by a series of quarter notes: G4, A4, B4, C5, B4, A4, G4. The final measure contains a whole note G4. The dynamic marking *f* is placed below the first measure. A repeat sign with a first ending bracket and the number 4 is at the end of the section.

Musical notation for the March section, measures 10-16. The key signature is one sharp (F#) and the time signature is common time (C). The music consists of eighth and quarter notes. The dynamic marking *f* is placed below the first measure.

Musical notation for the March section, measures 17-24. The key signature is one sharp (F#) and the time signature is common time (C). The music consists of eighth and quarter notes. The dynamic marking *f* is placed below the first measure.

Musical notation for the March section, measures 25-32. The key signature is one sharp (F#) and the time signature is common time (C). The music consists of eighth and quarter notes. The dynamic marking *mf* is placed below the first measure.

Musical notation for the March section, measures 33-41. The key signature is one sharp (F#) and the time signature is common time (C). The music consists of eighth and quarter notes. The dynamic markings *f*, *mf*, and *f* are placed below the first, middle, and last measures respectively.

Musical notation for the Trio section, measures 42-49. The key signature is one sharp (F#) and the time signature is common time (C). The music begins with a half note G4, followed by a series of quarter notes: A4, B4, C5, B4, A4, G4. The dynamic marking *p* is placed below the first measure.

Musical notation for the Trio section, measures 50-57. The key signature is one sharp (F#) and the time signature is common time (C). The music begins with a half note G4, followed by a series of quarter notes: A4, B4, C5, B4, A4, G4. The dynamic marking *f* is placed below the first measure.

Musical notation for the Finale section, measures 58-64. The key signature is one sharp (F#) and the time signature is common time (C). The music consists of quarter notes: G4, A4, B4, C5, B4, A4, G4. The dynamic marking *ff* is placed below the first measure.

Musical notation for the Finale section, measures 65-72. The key signature is one sharp (F#) and the time signature is common time (C). The music consists of quarter notes: G4, A4, B4, C5, B4, A4, G4. The dynamic marking *ff* is placed below the first measure.

Musical notation for the Finale section, measures 73-79. The key signature is one sharp (F#) and the time signature is common time (C). The music consists of eighth and quarter notes. The dynamic marking *ff* is placed below the final measure.

KRUPP ARTILLERY MARCH

(1881)

THEODORE ASHERFELD

Alto Saxophone 2

INTRODUCTION

Musical notation for the Introduction section, measures 1-9. The key signature is one sharp (F#) and the time signature is common time (C). The music begins with a whole rest, followed by a series of quarter notes and eighth notes. A dynamic marking of *f* (forte) is placed below the first measure. The section concludes with a final chord marked with a 4-measure rest.

Musical notation for the March section, measures 10-16. The key signature is one sharp (F#) and the time signature is common time (C). The music features a rhythmic pattern of quarter notes and eighth notes. A dynamic marking of *f* (forte) is placed below the first measure.

Musical notation for the March section, measures 17-24. The key signature is one sharp (F#) and the time signature is common time (C). The music continues with a rhythmic pattern of quarter notes and eighth notes.

Musical notation for the March section, measures 25-32. The key signature is one sharp (F#) and the time signature is common time (C). The music features a rhythmic pattern of quarter notes and eighth notes. A dynamic marking of *mf* (mezzo-forte) is placed below the first measure.

Musical notation for the March section, measures 33-41. The key signature is one sharp (F#) and the time signature is common time (C). The music features a rhythmic pattern of quarter notes and eighth notes. Dynamic markings of *f* (forte) and *mf* (mezzo-forte) are placed below the first and third measures, respectively.

Musical notation for the Trio section, measures 42-49. The key signature is one sharp (F#) and the time signature is common time (C). The music features a slower, more melodic line. A dynamic marking of *p* (piano) is placed below the first measure.

Musical notation for the Trio section, measures 50-57. The key signature is one sharp (F#) and the time signature is common time (C). The music features a slower, more melodic line. A dynamic marking of *f* (forte) is placed below the first measure.

Musical notation for the Finale section, measures 58-64. The key signature is one sharp (F#) and the time signature is common time (C). The music features a rhythmic pattern of quarter notes and eighth notes. A dynamic marking of *ff* (fortissimo) is placed below the first measure.

Musical notation for the Finale section, measures 65-72. The key signature is one sharp (F#) and the time signature is common time (C). The music features a rhythmic pattern of quarter notes and eighth notes.

Musical notation for the Finale section, measures 73-79. The key signature is one sharp (F#) and the time signature is common time (C). The music features a rhythmic pattern of quarter notes and eighth notes. A dynamic marking of *ff* (fortissimo) is placed below the final measure.

KRUPP ARTILLERY MARCH

Tenor Saxophone

(1881)

THEODORE ASHERFELD

INTRODUCTION

f

10 MARCH

f

17

25

33

42 TRIO

50

58 FINALE

65

73

KRUPP ARTILLERY MARCH

Baritone Saxophone

(1881)

THEODORE ASHERFELD

INTRODUCTION

f

MARCH

f

mf

f *mf* *f*

TRIO

p

f

FINALE

ff

ff

KRUPP ARTILLERY MARCH

Trumpet in Bb 1

(1881)

THEODORE ASHERFELD

INTRODUCTION

f

10 MARCH

f

17

f

25

mf

33

f *mf* *f*

42 TRIO

p

50

f

58 FINALE

ff

65

ff

73

ff

KRUPP ARTILLERY MARCH

Trumpet in Bb 2

(1881)

THEODORE ASHERFELD

INTRODUCTION

Musical notation for the Introduction section, measures 1-9. The key signature is one sharp (F#) and the time signature is common time (C). The music begins with a rest, followed by a series of eighth and quarter notes. A dynamic marking of *f* (forte) is placed below the staff. The section concludes with a four-measure rest.

4

f

MARCH

Musical notation for the March section, measures 10-16. The key signature is one sharp (F#) and the time signature is common time (C). The music features a series of eighth and quarter notes. A dynamic marking of *f* (forte) is placed below the staff.

10

f

17

Musical notation for the March section, measures 17-24. The key signature is one sharp (F#) and the time signature is common time (C). The music features a series of eighth and quarter notes. A dynamic marking of *f* (forte) is placed below the staff. The section concludes with a triplet of eighth notes.

3

25

Musical notation for the March section, measures 25-32. The key signature is one sharp (F#) and the time signature is common time (C). The music features a series of eighth and quarter notes. A dynamic marking of *mf* (mezzo-forte) is placed below the staff.

mf

33

Musical notation for the March section, measures 33-41. The key signature is one sharp (F#) and the time signature is common time (C). The music features a series of eighth and quarter notes. Dynamic markings of *mf* (mezzo-forte) and *f* (forte) are placed below the staff.

mf

mf

f

TRIO

Musical notation for the Trio section, measures 42-49. The key signature is one sharp (F#) and the time signature is common time (C). The music features a series of eighth and quarter notes. A dynamic marking of *p* (piano) is placed below the staff.

42

p

50

Musical notation for the Trio section, measures 50-57. The key signature is one sharp (F#) and the time signature is common time (C). The music features a series of eighth and quarter notes. A dynamic marking of *f* (forte) is placed below the staff.

f

FINALE

Musical notation for the Finale section, measures 58-64. The key signature is one sharp (F#) and the time signature is common time (C). The music features a series of eighth and quarter notes. A dynamic marking of *ff* (fortissimo) is placed below the staff.

58

ff

65

Musical notation for the Finale section, measures 65-72. The key signature is one sharp (F#) and the time signature is common time (C). The music features a series of eighth and quarter notes. A dynamic marking of *ff* (fortissimo) is placed below the staff.

73

Musical notation for the Finale section, measures 73-79. The key signature is one sharp (F#) and the time signature is common time (C). The music features a series of eighth and quarter notes. A dynamic marking of *ff* (fortissimo) is placed below the staff. The section concludes with a fermata over a final note.

ff

KRUPP ARTILLERY MARCH

(1881)

Trumpet in Bb 3

THEODORE ASHERFELD

INTRODUCTION

Musical notation for the Introduction section, measures 1-9. The key signature is one sharp (F#) and the time signature is common time (C). The music begins with a whole rest, followed by a series of quarter notes and eighth notes. A dynamic marking of *f* (forte) is placed below the first measure. The section concludes with a final chord marked with a '4' above the staff.

Musical notation for the March section, measures 10-16. The key signature is one sharp (F#) and the time signature is common time (C). The music consists of a series of quarter notes and eighth notes. A dynamic marking of *f* (forte) is placed below the first measure.

Musical notation for the March section, measures 17-24. The key signature is one sharp (F#) and the time signature is common time (C). The music consists of a series of quarter notes and eighth notes.

Musical notation for the March section, measures 25-32. The key signature is one sharp (F#) and the time signature is common time (C). The music consists of a series of quarter notes and eighth notes. A dynamic marking of *mf* (mezzo-forte) is placed below the first measure.

Musical notation for the March section, measures 33-41. The key signature is one sharp (F#) and the time signature is common time (C). The music consists of a series of quarter notes and eighth notes. Dynamic markings of *mf* (mezzo-forte) and *f* (forte) are placed below the first and third measures, respectively.

Musical notation for the Trio section, measures 42-49. The key signature is one sharp (F#) and the time signature is common time (C). The music consists of a series of quarter notes and eighth notes. A dynamic marking of *p* (piano) is placed below the first measure.

Musical notation for the Trio section, measures 50-57. The key signature is one sharp (F#) and the time signature is common time (C). The music consists of a series of quarter notes and eighth notes. A dynamic marking of *f* (forte) is placed below the first measure.

Musical notation for the Finale section, measures 58-64. The key signature is one sharp (F#) and the time signature is common time (C). The music consists of a series of quarter notes and eighth notes. A dynamic marking of *ff* (fortissimo) is placed below the first measure.

Musical notation for the Finale section, measures 65-72. The key signature is one sharp (F#) and the time signature is common time (C). The music consists of a series of quarter notes and eighth notes.

Musical notation for the Finale section, measures 73-79. The key signature is one sharp (F#) and the time signature is common time (C). The music consists of a series of quarter notes and eighth notes. A dynamic marking of *ff* (fortissimo) is placed below the final measure.

KRUPP ARTILLERY MARCH

(1881)

THEODORE ASHERFELD

Horn in F 1 and 2

INTRODUCTION

f

10 MARCH

17

25

mf

33

f *mf* *f*

42

TRIO

p

50

f

58

FINALE

ff

65

73

ff

KRUPP ARTILLERY MARCH

(1881)

Horn in F 3 and 4

THEODORE ASHERFELD

INTRODUCTION

Musical notation for the Introduction section, measures 1-9. The music is in 4/4 time and begins with a dynamic marking of *f*. The notation consists of a single staff with a treble clef and a common time signature. The melody is primarily composed of quarter and eighth notes, with some rests. A repeat sign is present at the end of the section, with a '4' above it indicating the number of measures.

Musical notation for the March section, measures 10-16. The music is in 4/4 time and begins with a dynamic marking of *f*. The notation consists of a single staff with a treble clef and a common time signature. The melody is primarily composed of quarter and eighth notes, with some rests. The key signature changes to one flat (B-flat) at the end of the section.

Musical notation for the March section, measures 17-24. The music is in 4/4 time and begins with a dynamic marking of *f*. The notation consists of a single staff with a treble clef and a common time signature. The melody is primarily composed of quarter and eighth notes, with some rests. The key signature remains one flat (B-flat).

Musical notation for the March section, measures 25-32. The music is in 4/4 time and begins with a dynamic marking of *mf*. The notation consists of a single staff with a treble clef and a common time signature. The melody is primarily composed of quarter and eighth notes, with some rests. The key signature remains one flat (B-flat).

Musical notation for the March section, measures 33-41. The music is in 4/4 time and begins with a dynamic marking of *f*. The notation consists of a single staff with a treble clef and a common time signature. The melody is primarily composed of quarter and eighth notes, with some rests. The key signature remains one flat (B-flat).

Musical notation for the Trio section, measures 42-49. The music is in 4/4 time and begins with a dynamic marking of *p*. The notation consists of a single staff with a treble clef and a common time signature. The melody is primarily composed of quarter and eighth notes, with some rests. The key signature changes to two flats (B-flat and E-flat) at the beginning of the section.

Musical notation for the Trio section, measures 50-57. The music is in 4/4 time and begins with a dynamic marking of *f*. The notation consists of a single staff with a treble clef and a common time signature. The melody is primarily composed of quarter and eighth notes, with some rests. The key signature remains two flats (B-flat and E-flat).

Musical notation for the Finale section, measures 58-64. The music is in 4/4 time and begins with a dynamic marking of *ff*. The notation consists of a single staff with a treble clef and a common time signature. The melody is primarily composed of quarter and eighth notes, with some rests. The key signature remains two flats (B-flat and E-flat).

Musical notation for the Finale section, measures 65-72. The music is in 4/4 time and begins with a dynamic marking of *ff*. The notation consists of a single staff with a treble clef and a common time signature. The melody is primarily composed of quarter and eighth notes, with some rests. The key signature remains two flats (B-flat and E-flat).

Musical notation for the Finale section, measures 73-79. The music is in 4/4 time and begins with a dynamic marking of *ff*. The notation consists of a single staff with a treble clef and a common time signature. The melody is primarily composed of quarter and eighth notes, with some rests. The key signature remains two flats (B-flat and E-flat). The section ends with a double bar line and a fermata over the final note.

KRUPP ARTILLERY MARCH

(1881)

THEODORE ASHERFELD

Trombone 1

INTRODUCTION

Musical notation for the Introduction section, measures 1-9. The key signature is one flat (B-flat), and the time signature is common time (C). The notation is on a bass clef staff. Measure 9 ends with a repeat sign and the number 4, indicating a four-measure rest.

MARCH

Musical notation for the March section, measures 10-16. The notation is on a bass clef staff. Measure 10 starts with a dynamic marking of *f* (forte).

Musical notation for the March section, measures 17-24. The notation is on a bass clef staff.

Musical notation for the March section, measures 25-32. The notation is on a bass clef staff.

Musical notation for the March section, measures 33-41. The notation is on a bass clef staff.

TRIO

Musical notation for the Trio section, measures 42-49. The notation is on a bass clef staff. Measure 42 starts with a dynamic marking of *p* (piano) and a '2' above the staff, indicating a two-measure rest.

Musical notation for the Trio section, measures 50-57. The notation is on a bass clef staff. Measure 50 starts with a dynamic marking of *f* (forte) and a '2' above the staff, indicating a two-measure rest.

FINALE

Musical notation for the Finale section, measures 58-64. The notation is on a bass clef staff. Measure 58 starts with a dynamic marking of *ff* (fortissimo).

Musical notation for the Finale section, measures 65-72. The notation is on a bass clef staff.

Musical notation for the Finale section, measures 73-79. The notation is on a bass clef staff. Measure 73 starts with a dynamic marking of *ff* (fortissimo). Measure 79 ends with a repeat sign and a '6' above the staff, indicating a six-measure rest.

ff

KRUPP ARTILLERY MARCH

(1881)

THEODORE ASHERFELD

Trombone 2

INTRODUCTION

6

f

10 MARCH

f

17

25

mf

33

mf *mf* *f*

42 TRIO 2

p *p*

50 2

f *mf*

58 FINALE

ff

65

73

ff

KRUPP ARTILLERY MARCH

(1881)

THEODORE ASHERFELD

Trombone 3

INTRODUCTION

6

f

10 MARCH

f

17

25

mf

33

mf *mf* *f*

42 TRIO 2

p *p*

50

f *mf*

58

FINALE

ff

65

73

ff

KRUPP ARTILLERY MARCH

(1881)

Euphonium

THEODORE ASHERFELD

INTRODUCTION

f

MARCH

f

mf

mf *mf* *f*

TRIO

p

f

FINALE

ff

ff

KRUPP ARTILLERY MARCH

(1881)

Euphonium

THEODORE ASHERFELD

INTRODUCTION



10 MARCH



17



25



33



42 TRIO



50



58

FINALE



65



73



KRUPP ARTILLERY MARCH

(1881)

Tuba

THEODORE ASHERFELD

INTRODUCTION

f

10 MARCH

f

17

25

33

42 TRIO

p

50

58 FINALE

ff

65

73

ff

KRUPP ARTILLERY MARCH

(1881)

THEODORE ASHERFELD

Percussion

INTRODUCTION

f snare

10 MARCH shotgun if possible

f ala artillery fire

2

3

3

42 TRIO 8 8

p

58 FINALE

ff tuba

65

73 snare ala artillery fire
shotgun if possible *ff*

KRUPP ARTILLERY MARCH

(1881)

Timpani

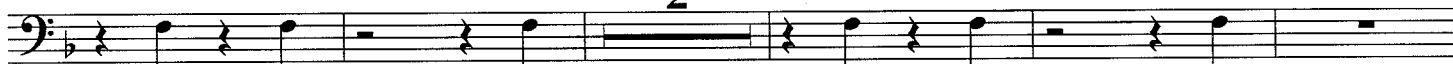
THEODORE ASHERFELD

INTRODUCTION



f

10 MARCH

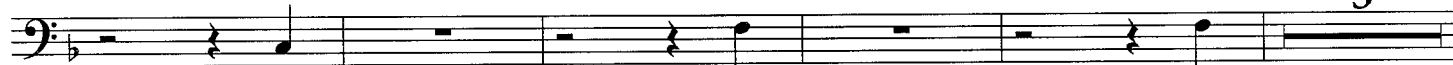


f ala artillery fire

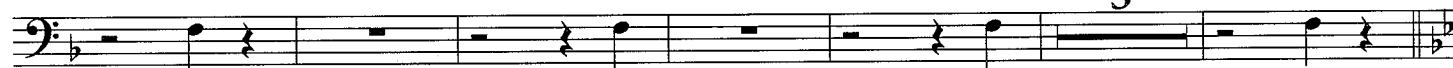
17



25

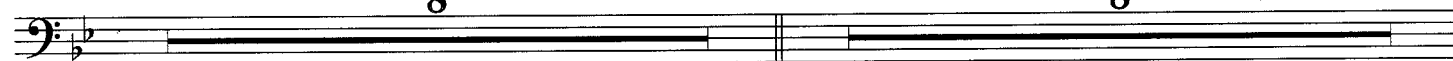


33



42

TRIO



p

58 FINALE



ff tuba

65



73

timp.

ala artillery fire

