

Overture "Komet"

Piccolo

B. Grünfelder.

Marcia

Andte

Waltz

f *rit.* *p* *p* *f* *ff* *mf* *f* *mf*

The Dixie Music House, Chicago, Ill.

Musical staff with notes and dynamics. Dynamics include *f*. There are also some markings like *tr* and *tr* with a wavy line.

Musical staff with notes and dynamics. Dynamics include *f*. There are also some markings like *tr* and *tr* with a wavy line.

Musical staff with notes and dynamics. Dynamics include *f*. There are also some markings like *tr* and *tr* with a wavy line. The word "Marcia" is written above the staff.

Musical staff with notes and dynamics. Dynamics include *f*. There are also some markings like *tr* and *tr* with a wavy line.

Musical staff with notes and dynamics. Dynamics include *f* and *mf*. The word "All." is written above the staff.

Musical staff with notes and dynamics. Dynamics include *f*. There are also some markings like *tr* and *tr* with a wavy line.

Musical staff with notes and dynamics. Dynamics include *f*. There are also some markings like *tr* and *tr* with a wavy line.

Musical staff with notes and dynamics. Dynamics include *f*. There are also some markings like *tr* and *tr* with a wavy line.

Musical staff with notes and dynamics. Dynamics include *mf*. There are also some markings like *tr* and *tr* with a wavy line.

Musical staff with notes and dynamics. Dynamics include *f* and *ff*. There are also some markings like *tr* and *tr* with a wavy line.

Musical staff with notes and dynamics. Dynamics include *f*. There are also some markings like *tr* and *tr* with a wavy line. The word "Solo" is written above the staff.

Oboe

Overture "Komet"

B. Grünfelder.

Musical score for Oboe, featuring sections: Marcia, Andte, Solo, Waltz, and All. The score includes dynamic markings (f, mf, ff, p, trm) and performance instructions (1, 2, 3, trm, Cad.).

Overture "Komet"

E \flat Clarinet

B. Grünfelder.

Marcia

f *rit.* *p* *f* *ff*

Andte

Waltz

Cad. *p* *mf* *f* *mf* *f*

The first section consists of two staves of music. The top staff begins with a dynamic marking of *f* and contains several measures of music with accents (*v*) and slurs. The bottom staff continues the melody, also featuring accents and slurs. The key signature has one sharp (F#) and the time signature is 2/4.

Marcia

The 'Marcia' section begins with a first ending bracket and a dynamic marking of *f*. It then transitions to a section marked 'All.' (Allegro) with a dynamic marking of *f*. The tempo and dynamic change to *mf* (mezzo-forte) for a few measures. The section continues with various dynamics including *f*, *mf*, and *ff* (fortissimo). The key signature remains one sharp (F#) and the time signature is 2/4. The section concludes with a 'Solo' marking for the trumpet, indicated by a 'tr' symbol above the notes, and a final dynamic marking of *ff*.

Overture "Komet"

Solo B^b Clarinet

B. Grünfelder.

Musical score for Solo B^b Clarinet, Overture "Komet" by B. Grünfelder. The score is divided into three sections: Marcia, Andte, and Waltz Solo.

Marcia: The first section is marked *f* and begins with a first ending bracket. It features a rhythmic melody with eighth and sixteenth notes.

Andte: The second section is marked *rit.* and *p*. It features a slower, more melodic line with some trills and grace notes.

Waltz Solo: The third section is marked *p* and *mf*. It features a waltz rhythm with triplets and first/second ending brackets. The key signature changes to one sharp (F#).

mf

f

ff

ff Solo *tr.*

Marcia

f

f

All.

f

mf

f

f

ff

f

ff

ff Solo *tr.*

Overture "Komet"

1st B^b Clarinet

B. Grunenfelder.

Musical score for 1st B^b Clarinet, Overture "Komet" by B. Grunenfelder. The score is written in treble clef and 2/4 time. It begins with a *Marcia* section marked *f*. The tempo then changes to *Andte*, with markings for *rit.* and *p*. The score includes various dynamics such as *f*, *ff*, *p*, and *mf*. The piece concludes with a *Cad* section and a *Waltz* section in 3/4 time, marked *mf*. The score features numerous slurs, ties, and articulation marks.

The Dixie Music House, Chicago, Ill.

mf

f

trm

trm

trm

ff

Marcia

f

All.

f

mf

f

f

mf

f

ff

Solo

trm

ff

Overture "Komet"

2^d & 3^d B^b Clarinets

B. Grünenfelder.

Marcia



Andte



Waltz



Musical staff with chords and dynamics. Dynamics include *f*.

Musical staff with chords and dynamics. Dynamics include *f*.

Musical staff with chords and dynamics. Dynamics include *ff*. Trills are marked with *trm*.

Musical staff with dynamics and tempo markings. Dynamics include *f*. Tempo markings include *Marcia* and *All.*

Musical staff with dynamics and tempo markings. Dynamics include *f* and *mf*. Tempo markings include *All.*

Musical staff with chords and dynamics. Dynamics include *f*.

Musical staff with chords and dynamics. Dynamics include *f*.

Musical staff with chords and dynamics. Dynamics include *f*.

Musical staff with chords and dynamics. Dynamics include *mf*.

Musical staff with chords and dynamics. Dynamics include *f*.

Musical staff with chords and dynamics. Dynamics include *ff*.

Musical staff with dynamics and tempo markings. Dynamics include *ff*. Tempo markings include *Solo*. Trills are marked with *trm*.

Overture "Komet"

Bassoon

B. Grünfelder.

Musical score for Bassoon, Overture "Komet" by B. Grünfelder. The score is divided into several sections:

- Marcia**: Starts with a *f* dynamic, marked *Solo* and *rit.*
- Andte**: Features a *p* dynamic and first endings.
- Waltz**: Includes a *Cad p* marking, a *f* dynamic, and first/second endings.
- Marcia**: Features a *ff* dynamic and a *Solo* marking.
- All.**: Includes a *f* dynamic, a *mf* dynamic, and first endings.
- Solo**: Features a *ff* dynamic.

The Dixie Music House, Chicago, Ill.

Overture "Komet"

Soprano Saxophone

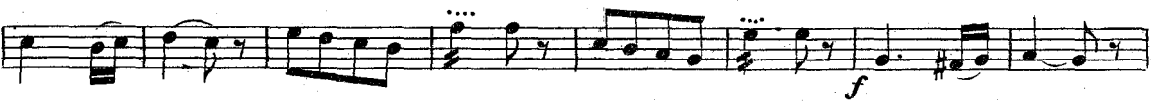
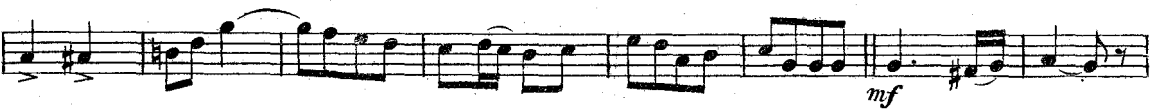
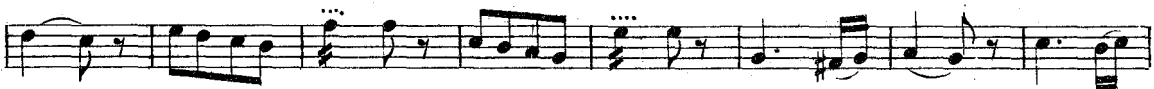
B. Grünenfelder.

Marcia

Andte

Waltz

f *rit.* *p* *f* *ff* *Cad p* *mf* *f* *mf* *f* *mf*



Overture "Komet"

Alto Saxophone

B. Grünfelder.

Musical score for Alto Saxophone, Overture "Komet" by B. Grünfelder. The score is divided into sections: Marcia, Andte, Solo, Waltz, and Marcia. It includes various musical notations such as dynamics (f, p, mf, ff), articulation (rit., Cut.), and performance instructions (1, 2).

Overture "Komet"

Tenor Saxophone

B. Grünfelder.

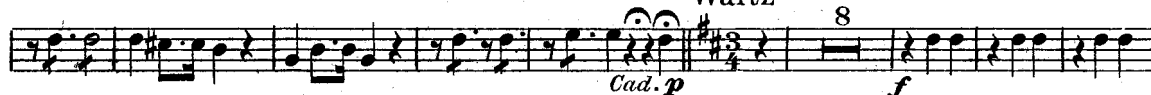
Marcia



Andte



Waltz



Marcia



Solo



The Dixie Music House, Chicago, Ill.

Overture "Komet"

Baritone Saxophone

B. Grünfelder.

Marcia

Andte

Waltz

Marcia

All.

f, *p*, *ff*, *mf*, *rit.*, *cad. p*, *1*, *2*, *8*

The Dixie Music House, Chicago, Ill.

Overture "Komet"

E^b Cornet

Conductor

B. Grünfelder.

Marcia.

Basses

f

Andte

B^b Cornets Duett

rit.

p

Bass Solo.

ff

Cad.

Solo Cor.

Waltz

1st B^b

Clar.

mf

f

1 2

The Dixie Music House, Chicago, Ill.

Clar.
mf *f* *mf* Solo *f*

Musical score for Clarinet (Clar.) in G major, 2/4 time. The piece starts with a mezzo-forte (*mf*) dynamic and features several accents. It includes a solo section marked *f* (forte) and another *mf* section. The score consists of five staves of music.

Marcia.
Basses *f* *p.*

Musical score for Basses in G major, 2/4 time. The piece is marked *f* (forte) and includes a piano (*p.*) section. The score consists of one staff of music.

All. Solo 1st B♭ *f* *mf*

Musical score for 1st B♭ in G major, 2/4 time. The piece is marked *f* (forte) and includes a mezzo-forte (*mf*) section. The score consists of one staff of music.Musical score for Basses in G major, 2/4 time. The piece is marked *f* (forte). The score consists of one staff of music.

Solo *f*

Musical score for Basses in G major, 2/4 time. The piece is marked *f* (forte) and includes a solo section. The score consists of one staff of music.Musical score for Basses in G major, 2/4 time. The piece is marked *f* (forte). The score consists of one staff of music.Musical score for Basses in G major, 2/4 time. The piece is marked *mf* (mezzo-forte). The score consists of one staff of music.Musical score for Basses in G major, 2/4 time. The piece is marked *f* (forte) and includes a fortissimo (*ff*) section. The score consists of one staff of music.

Cl. *mf* Basses *ff*

Musical score for Basses in G major, 2/4 time. The piece is marked *ff* (fortissimo) and includes a mezzo-forte (*mf*) section. The score consists of one staff of music.

Overture "Komet"

Solo B^b Cornet

B. Grünfelder

Marcia

f Basses

rit. Solo Andte

Cl.

Basses

ff

Cad.

Duett

1st Bb

Waltz

Clar.

p

Cor.

f

Clar.

mf

Cor. *f*



Cl. *mf* Cor. *f*



Cl.



Cl. *tr* Marcia *f* Basses



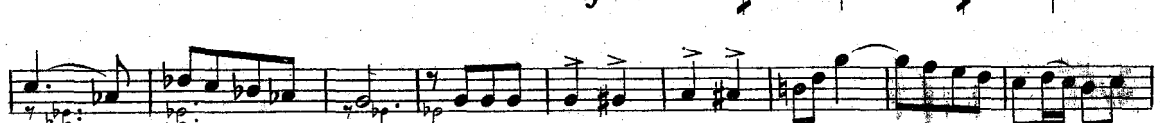
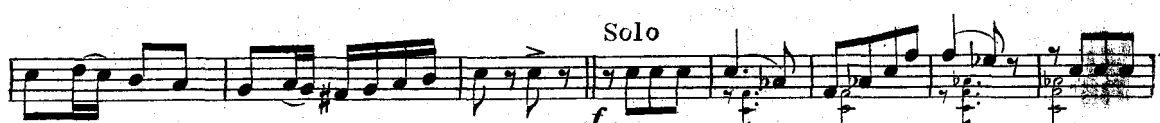
Solo All. Ist B \flat *mf*



Solo *f*



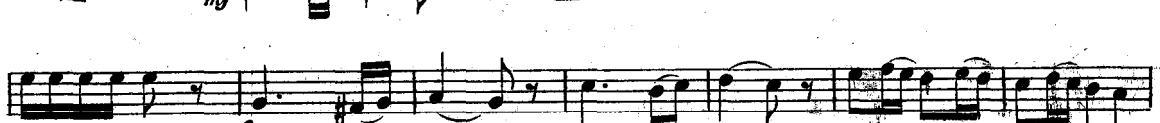
Solo *f*



Cl. *mf*



f



ff



Cl. *tr* Basses



Overture "Komet"

1st B \flat Cornet

B. Grünfelder.

Musical score for 1st B \flat Cornet, Overture "Komet" by B. Grünfelder. The score is divided into three main sections: Marcia, Andte, and Waltz.

Marcia: The first section is marked "Marcia" and begins with a dynamic of *f*. It features a melodic line with a first ending bracket and a "Solo" marking. The tempo is indicated as *rit.* and the dynamics range from *f* to *p*.

Andte: The second section is marked "Andte" and begins with a dynamic of *p*. It consists of several staves of music, with dynamics increasing to *f* and *ff* towards the end of the section.

Waltz: The third section is marked "Waltz" and begins with a dynamic of *mf*. It features a melodic line with a "Solo" marking and a "Vad." (Vad. Solo B \flat) marking. The tempo is indicated as *mf* and the dynamics range from *f* to *mf*. The section concludes with first and second endings.

2d B \flat Clar.: The second clarinet part is shown at the bottom of the page, with dynamics of *mf* and *f*.

Cor.

f

ff

This section consists of three staves of music. The first staff begins with a dynamic marking of *f* and contains rhythmic patterns with accents. The second staff continues with similar rhythmic figures. The third staff concludes the section with a dynamic marking of *ff* and a final note with a fermata.

Marcia

1

f

This section consists of two staves of music. The first staff starts with a first ending bracket over a series of eighth notes, marked with a dynamic of *f*. The second staff continues the rhythmic pattern.

All.

Solo

f

Solo

mf

This section consists of two staves of music. The first staff begins with a dynamic marking of *f* and a tempo marking of *All.*. The second staff continues with a dynamic marking of *mf*.

This section consists of two staves of music, continuing the rhythmic and melodic patterns from the previous section.

This section consists of two staves of music, continuing the rhythmic and melodic patterns from the previous section.

This section consists of two staves of music, continuing the rhythmic and melodic patterns from the previous section.

mf

This section consists of two staves of music. The second staff begins with a dynamic marking of *mf*.

f

This section consists of two staves of music. The second staff begins with a dynamic marking of *f*.

ff

This section consists of two staves of music. The second staff begins with a dynamic marking of *ff*.

This section consists of two staves of music, concluding the piece with a final cadence.

Overture "Komet"

2d & 3d B^b Cornets

B. Grünfelder.

Musical score for 2d & 3d B^b Cornets, featuring sections: Marcia, Andte, Solo, Waltz, and Marcia. Includes dynamics (f, ff, mf, p) and performance markings (rit., Solo).

Marcia
Andte
Solo
Waltz
Marcia
All. Solo
Solo

f *ff* *mf* *p* *f* *mf* *f* *mf* *f* *ff* *f* *mf* *f* *ff*

rit. *4* *3/4* *1* *2*

Overture "Komet"

1st & 2d Altos

B. Grünenfelder.

Musical score for 1st & 2d Altos of Overture "Komet" by B. Grünenfelder. The score is written for two staves and includes various musical notations such as dynamics (*f*, *p*, *ff*, *mf*), articulation (accents), and tempo/style markings (*Marcia*, *Andte*, *Waltz*, *Solo*, *All.*). The piece is in G major and 2/4 time. It begins with a *Marcia* section, followed by an *Andte* section, a *Cad.* section, a *Waltz* section, a *Solo* section, and an *All.* section. The score concludes with a final cadence.

Overture "Komet"

3^d & 4th Altos

B. Grünfelder.

Musical score for 3^d & 4th Altos, Overture "Komet" by B. Grünfelder. The score is written in treble clef with a key signature of one sharp (F#) and a common time signature (C). It consists of 14 staves of music.

The score is divided into several sections:

- Marcia:** The first section, starting with a first ending bracket. Dynamics include *f*, *rit.*, and *p*.
- Andte:** The second section, marked *p*. It features a series of chords and melodic lines.
- Waltz:** The third section, marked *mf*. It includes a *Cad.* (Cadenza) and a first ending bracket.
- Solo:** A section marked *f* with a first ending bracket.
- All. (Allegretto):** A section marked *f* and *mf*.
- Marcia:** A final section marked *f* with a first ending bracket.

The score concludes with a *ff* (fortissimo) dynamic marking.

The Dixie Music House, Chicago, Ill.

Overture "Komet"

Tenors 

B. Grünenfelder.

Musical score for Tenors, 3d & 4th Altos, and Solo parts. The score is divided into sections: Marcia Solo, Andte, Waltz, and Marcia Solo. Dynamics include *f*, *p*, *ff*, *mf*, and *rit.*. The score includes various musical notations such as clefs, notes, rests, and articulation marks.

Marcia Solo
f *rit.*

Andte
p 3d & 4th Altos

Tenors 3d & 4th Altos Solo
p *f*

Waltz
mf *f* *Cad.* *p*

3d & 4th Altos Tenors
mf *f*

Marcia Solo
f *All* *mf* *f*

Solo
mf *f*

Overture "Komet"

Trombones 9:

B. Grünfelder.

Marcia
Solo
f

Andte
p

3d & 4th Altos

Trom.
p

3d & 4th Altos

Solo
f

ff

Cad. Waltz 2
p

mf

3d & 4th Altos

Trom.

mf

3d & 4th Altos

Trom.

Solo
f

ff

Marcia
Solo
f

All
f

mf

f

mf

Solo
f

ff


Overture "Komet"

3^d Trombone or B^b Bass ♭:

B. Grünfelder.

Musical score for 3^d Trombone or B^b Bass, featuring sections: Marcia, Andte, Solo, Waltz, and All. The score includes dynamic markings (f, ff, p, mf) and performance instructions (rit., Solo, Cad., All.).

Overture "Komet"

Baritone 

B. Grünfelder.

Marcia.
Solo

Andte *f* *rit.*

p

Solo *f* *ff*

Waltz.
mf *f*

Solo *ff*

Marcia.
Solo *f*

All. *f* *mf*

Solo *f* *ff*

Overture "Komet"

Baritone ♭:

B. Grünfelder.

Musical score for Baritone ♭, featuring various sections and dynamics:

- Marcia Solo** (top line): *rit.*
- Andte** (second line): *f*, *p*, *Solo*
- ff** (third line)
- Waltz** (fourth line): *Cadp*, *mf*, *f*
- Marcia** (fifth line): *f*, *ff*, *Solo*
- All.** (sixth line): *f*, *mf*
- ff** (seventh line)
- Solo** (eighth line): *ff*

Overture "Komet"

Tuba

B. Grünfelder.

Musical score for Tuba part of Overture "Komet" by B. Grünfelder. The score is written in bass clef with a key signature of two flats (B-flat and E-flat). It features various musical markings including "Marcia Solo", "Andte", "Solo", "ff", "mf", "f", "rit.", "p", "Cad.", "Waltz", "All.", and "Solo".

Overture "Komet"

3^d Trombone or B^b Bass

B. Grünfelder.

Musical score for 3^d Trombone or B^b Bass, featuring various sections and dynamics.

Marcia Solo
f rit.

Andte
p 4

Solo
f 3

Cad. Waltz
p f 8 1 2

Solo
ff

Marcia
f

All.
f mf

Solo
f ff

Overture "Komet"

Drums

B. Grünenfelder.

The musical score for Drums in "Overture 'Komet'" is written on a single staff. It begins with a **Marcia** section in 2/4 time, marked *f* and *rit.* The first measure has a first ending bracket. The score then transitions to an **Andte** section, marked *f*, featuring a **Tria.** (triple) pattern. This is followed by a **Waltz** section in 3/4 time, marked *mf* and *Cad.* (cadenza). The score continues with several **Tria.** (triple) patterns, some marked *mf* and others *f*. A **Marcia** section returns, marked *ff*. The final section is marked **All.** (Allegro) and *f*, featuring a **Tria.** pattern. The score concludes with a **Marcia** section marked *ff*. The piece ends with a double bar line and a final flourish.