

Flute in C

GO GALOP

WILL·HUFF

1296

Trill

ff

mf

mf

ff

p-f

p-f

GO

Oboe

GO GALOP

WILL HUFF

1296

ff *f* *mf* *ff*

GO

TRIO

p-f

Bassoon

GO GALOP

WILL HUFF

1296

ff *f* *mf* *ff*

TRIO

p-f

1 2

1 2

Fillmore Music House, Cin, O.

E♭ Clarinet

GO GALOP

WILL HUFF

1296

sf *f* *mf* *sf*

TRIO

p-f *f* *sf*

GO

Solo or 1st B \flat Clarinet

GO GALOP

WILL HUFF

1296

The first section of the score consists of five staves of music. The first staff begins with a treble clef, a key signature of one flat (B \flat), and a 2/4 time signature. It features a series of eighth notes and quarter notes, with a dynamic marking of *ff* (fortissimo) and a trill-like flourish above the first few notes. The second staff continues with a melodic line, marked *mf* (mezzo-forte). The third staff shows a continuation of the melody with a *ff* marking and includes first and second endings. The fourth staff features a melodic line with a *mf* marking and a *ff* marking. The fifth staff concludes the section with a *ff* marking and includes first and second endings.

GO

TRIO

The TRIO section consists of three staves of music. The first staff begins with a treble clef, a key signature of one flat (B \flat), and a 2/4 time signature. It features a melodic line with a dynamic marking of *p-f* (piano-forte). The second staff continues the melody with a *p-f* marking. The third staff concludes the section with a *p-f* marking and includes first and second endings.

2d & 3d B \flat Clarinets

GO GALOP

WILL HUFF

1296

ff

mf

mf

ff

ff

TRIO

p-f

1 2

1 2

1 2

GO

Soprano Saxophone

GO
GALOP

WILL HUFF

1296

ff
mf
mf *ff*

GO

TRIO

p-f

Solo Alto Saxophone

GO GALOP

WILL HUFF

1296

ff

mf *cresc.* *fff*

mf *ff*

ff

TRIO
p-f

ff

GO

Alto Saxophone

GO GALOP

WILL HUFF

1296

ff *mf* *ff* *ff*

TRIO

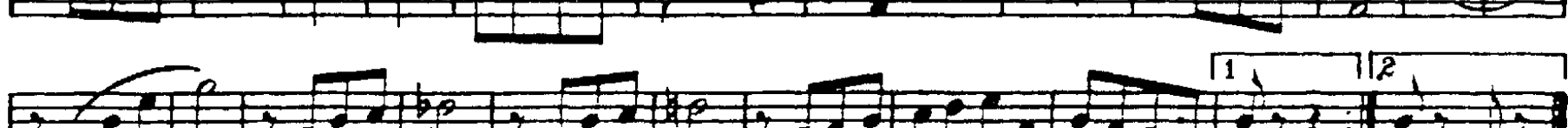
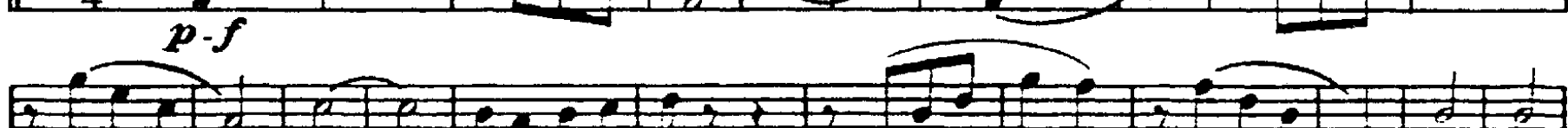
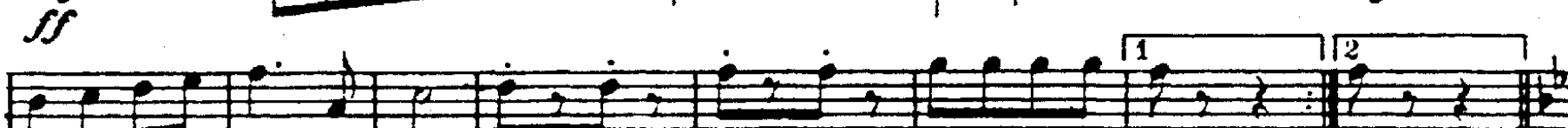
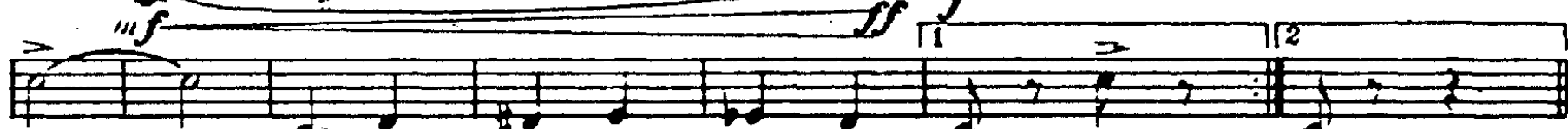
p-f

Fillmore Music House, Cin.O...

Tenor Saxophone

GO GALOP

WILL HUFF



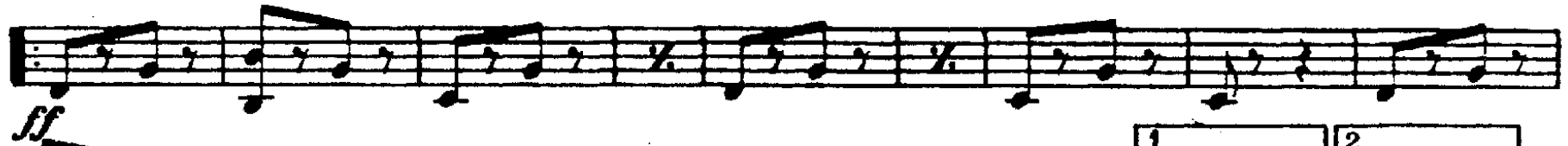
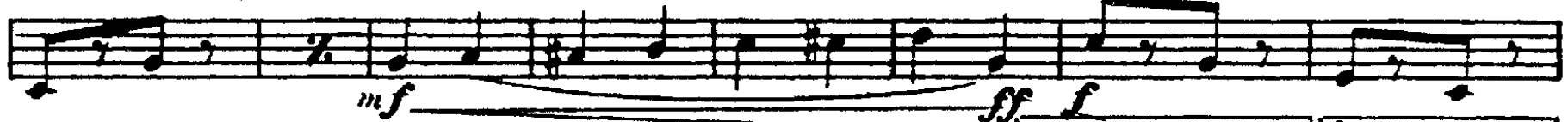
GO

Baritone Saxophone

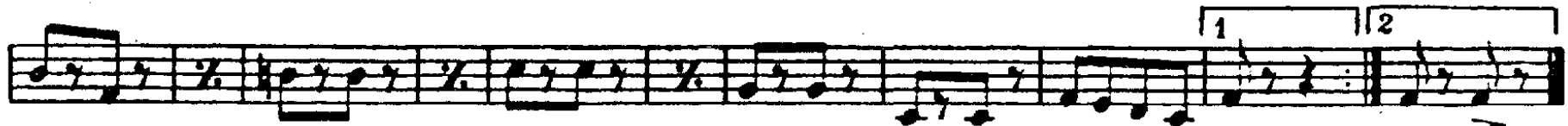
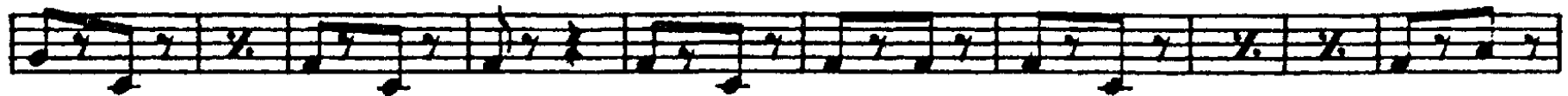
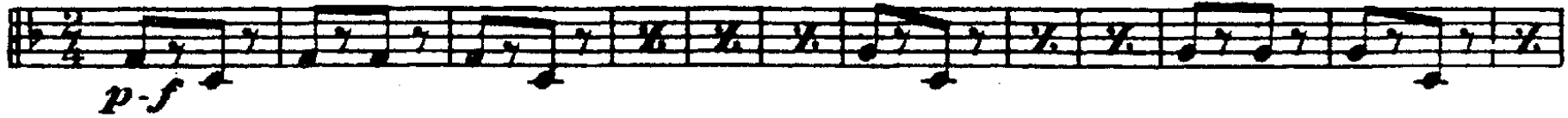
GO
GALOP

WILL HUFF

1296 



TRIO



GO

Solo B \flat Cornet
(Conductor)

GO GALOP

WILL HUFF

1296

ff *mf* *ff* *mf* *ff* *ff* *mf* *ff* *ff* *ff* *ff* *ff*

TRIO

p-f

GO

1st B \flat Cornet

GO GALOP

WILL HUFF

1296

ff *mf* *f*

GO

TRIO

p-f *f*

Fillmore Music House, Cin. O.

2d & 3d B \flat Cornets

GO GALOP

WILL HUFF

1296

ff *mf* *ff* *ff* *mf* *ff* *ff* *ff*

TRIO

p-f

1 2 1 2

GO

1st & 2d E♭ Altos

GO GALOP

WILL HUFF

1296

ff *f* *mf* *ff*

TRIO

p-f

1 2

1 2

1 2

GO

3d & 4th E♭ Altos

GO GALOP

WILL HUFF

1296

ff *f* *mf*

TRIO

p-f

Fillmore Music House, Cin. O.

1st & 2d Trombones b

GO GALOP

WILL HUFF

1296

ff *f* *mf* *sf*

GO

TRIO

p-f

3d Trombone



GO GALOP

WILL HUFF

1296

ff *mf* *ff* *ff*

TRIO

p-f

GO

Baritone 

GO GALOP

WILL HUFF

1296




ff *f* *mf* *sf*

TRIO

p-f

GO

Baritone 

GO GALOP

WILL HUFF

1296



TRIO



GO

Basses

GO GALOP

WILL HUFF

1296

mf *ff* *p-f* *p-f* *p-f* *p-f* *p-f*

TRIO

1 2 1 2 1

1 2

GO

DRUMS

GO GALOP

WILL HUFF
Revised by D.D. MacLEOD

The first section of the score consists of five staves of music. The first staff is in bass clef with a 2/4 time signature and a key signature of one sharp (F#). It begins with a dynamic marking of *ff*. The second staff is in treble clef and includes a dynamic marking of *mf* and a *cresc.* (crescendo) marking. The third staff is in treble clef and includes a dynamic marking of *mf*. The fourth and fifth staves are in treble clef and include a dynamic marking of *ff*. The music features various rhythmic patterns, including eighth and sixteenth notes, and rests.

The second section of the score consists of five staves of music. The first staff is in bass clef with a 2/4 time signature and a key signature of one sharp (F#). It begins with a dynamic marking of *p-f*. The second, third, and fourth staves are in treble clef. The fifth staff is in treble clef and includes a dynamic marking of *ff*. The music continues with various rhythmic patterns and rests.

GO