

TWO STEP—"CLORINDA."

By kind permission of Messrs. J. B. Cramer & Co. Ltd.

MONTAGUE RING.

ARR: BY J. ORD HUME.

1st Cornet in Bb. Conductor.

f *ff* *mf* *cres:* *ff* *p* *TO CODA.* 1. 2. **SAND DANCE.** 1. 2. *P* **PLANTATION CHORUS.** (SING AD LIB.)
(N.B. QUARTETTE— 1st CORNET, 2nd CORNET, 1st TROMBONE AND EUPHONION.)
p Come, sweet, Clo-rin-da, stray a while with me, Un-der the star-lit sky,----
Gent-ly the night wind sighs of love and thee, Un-to the moon on high----
Come then and list to the sweet night-in-gale, Trill-ing his love--laden song,-----
And while I soft-ly tell the old sweet tale, Come, my Clo-rin-da, come.---- *f*
SAND DANCE. *f* 1. 2. **CODA.** *D.C.* *ff*

463.

TWO STEP—"CLORINDA"

MONTAGUE RING.

By kind permission of Messrs. J. B. Cramer & Co. Ltd.

Piccolo in Eb.

f *ff* *mf*

cres:

ff

TO CODA.

SAND DANCE

p

p

Come, sweet Clo_rin_da, stray a while with me, Un_der the star_lit sky,-----

PLANTATION CHORUS. (SING AD LIB)

Gent_ly the night wind sighs of love and thee, Un_to the moon on high.-----

Come then and list to the sweet night_in_gale, Trilling his love-laden song,-----

And while I soft_ly tell the old sweet tale, Come, my Clo_rin_da, come.-----

SAND DANCE.

f

1. 2.

D. C.

CODA.

ff

TWO STEP "CLORINDA"

MONTAGUE RING.

By kind permission of Messrs. J. B. Cramer & Co. Ltd.

Clarinet in Eb.

f *ff* *mf*

cres:

TO CODA.

ff SAND DANCE.

p PLANTATION CHORUS. (SING AD LIB)

Come, sweet Clo-rin-da, stray a while with me, Un-der the star-lit sky,----

Gent-ly the night wind sighs of love and thee, Un-to the moon on high-----

Come then and list to the sweet night-in-gale, Trilling his love-laden song,----

And while I soft-ly tell the old sweet tale, Come, my Clo-rin-da, come----- *f*

f SAND DANCE.

1 2

D.C.

CODA.

ff

463.

TWO STEP—"CLORINDA."

MONTAGUE RING.

By kind permission of Messrs. J. B. Cramer & Co. Ltd.

ARR: BY J. ORD HUME.

1st Clarinet in Bb.

f *ff* *mf* *mf*

cres:

ff *p* TO CODA.

ff SAND DANCE.

p

PLANTATION CHORUS. (SING AD LIB)

N.B. QUARTETTE - SOLO CORNET, 2nd CORNET, 1st TROMBONE, AND EUPHONION.

p Come, sweet Clo-rin-da, stray a while with me, Un-der the star-lit sky,----

Gent-ly the night wind sighs of love and thee, Un-to the moon on high.----

Come then and list to the sweet night-in-gale, Trilling his love-laden song,----

And while I soft-ly tell the old sweet tale, Come, my Clo-rin-da, come. *f*

SAND DANCE.

f CODA.

1. 2.

D.C. *ff*

463.

TWO STEP—"CLORINDA"

By kind permission of Messrs J. B. Cramer & Co. Ltd.

MONTAGUE RING.

ARR: BY J. ORD HUME.

2nd Clarinet in Bb.

f *ff* *mf* *cres:* *ff* *p* *TO CODA.* *ff*

SAND DANCE.

p *PLANTATION CHORUS. (SING AD LIB)* *p* *ALTO.*

Come, sweet Clo_rin_da, stray a while with me, Un_der the star_lit sky, The star_lit sky,

Gent_ly the night wind sighs of love and thee, Un_to the moon on high.....

Come then and list to the sweet night_in_gale, Trilling his love_laden song, his love_laden

song, While I soft_ly tell the old sweet tale, Come, my Clo_rin_da, come..... *f*

SAND DANCE.

f *CODA.* *ff* *D.C.*

463.

TWO STEP—"CLORINDA"

MONTAGUE RING.

By kind permission of Messrs. J. B. Cramer & Co. Ltd.

Soprano Cornet in E♭.

f **ff** **mf**
cres:
ff **p**
 TO CODA.
ff 1. > > > 2.
SAND DANCE.
p PLANTATION CHORUS. (SING AD LIB)
 SOPRANO.
p Come, sweet Clo_rin_da, stray a while with me, Un_der the star-lit sky,----
 Gent_ly the night wind sighs of love and thee, Un_to the moon on high----
 Come then and list to the sweet night_in_gale, Trill_ing his love--laden song,----
 And while I soft_ly tell the old sweet tale, Come, my Clo_rin_da, come.---- **f**
SAND DANCE.
f CODA.
D.C. **ff**

463.

TWO STEP—"CLORINDA"

MONTAGUE RING.

By kind permission of Messrs. J. B. Cramer & Co. Ltd.

Ripieno Cornet in Bb.

f *ff* *mf* *cres:* *ff* *p* *TO CODA.*

SAND DANCE.

P PLANTATION CHORUS. (SING AD LIB)
ALTO.

p Come, sweet Clo_rin_da, stray a while with me, Un_der the star_lit sky, The star_lit sky,

Gent_ly the night wind sighs of love and thee, Un_to the moon on high.....

Come then and list to the sweet night_in_gale, Trilling his love-laden song, His love_laden

song, While I soft_ly tell the old sweet tale, Come, my Clo_rin_da, come..... *f*

SAND DANCE.

f *1.* *2.* *CODA.* *D.C.* *ff*

463.

TWO STEP—"CLORINDA"

By kind permission of Messrs. J B Cramer & Co. Ltd.

MONTAGUE RING.

2nd Cornet in Bb.

f *ff* *mf*

cres:

ff *p*

ff

TO CODA.

1. 2.

SAND DANCE.

p

PLANTATION CHORUS. (SING AD LIB)

ALTO.

1. 2.

p

Come, sweet Clo_rin_da, stray a while with me, Un_der the star_lit sky, The star_lit sky,

Gently the night wind sighs of love and thee, Un_to the moon on high-----

Come then and list to the sweet night_in_gale, Trilling his love-laden song, His love-laden

song, While I soft_ly tell the old sweet tale, Come, my Clo_rin_da, come-----

f

1. 2.

D.C.

CODA.

ff

463.

TWO STEP—"CLORINDA"

MONTAGUE RING.

By kind permission of Messrs. J.B. Cramer & Co. Ltd.

3rd & 4th Cornets in Bb.

f *ff* *mf*

mf

cres:

ff *p*

TO CODA.

ff

SAND DANCE.

p

PLANTATION CHORUS. (SING AD LIB)
TENOR.

p

Come, sweet Clo_rin_da, stray a while with me, Under the star_lit sky, The star_lit sky,

Gently the night wind sighs of love and thee, Un_to the moon on high-----

Come then and list to the sweet night_in_gale, Trilling his love-laden song,-----

And while I soft_ly tell the old sweet tale, Come, my Clo_rin_da, come-----

SAND DANCE.

f

CODA.

ff

D.C.

463.

TWO STEP—"CLORINDA."

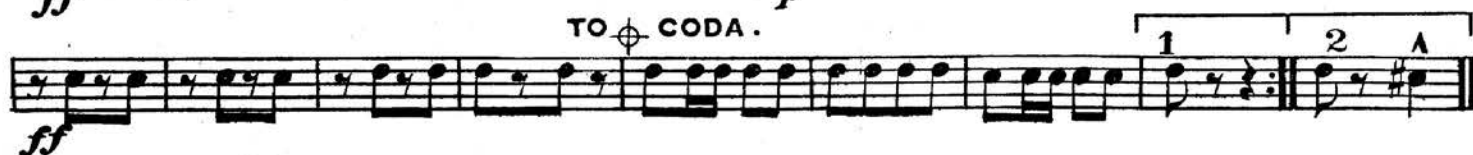
MONTAGUE RING.

By kind permission of Messrs. J.B. Cramer & Co. Ltd.

Solo Tenor in E♭.



TO CODA.



SAND DANCE.

PLANTATION CHORUS (SING AD LIB)
ALTO.*p* Come, sweet Clo_rin_da, stray a while with me, Under the star_lit sky, The star_lit sky,

Gently the night wind sighs of love and thee, Un_to the moon on high-----



Come then and list to the sweet night_in_gale, Trilling his love-laden song, His love-laden



song, While I soft_ly tell the old sweet tale Come, my Clo_rin_da, come-----

SAND DANCE.



463.

TWO STEP—"CLORINDA."

MONTAGUE RING.

By kind permission of Messrs. J. B. Cramer & Co. Ltd.

1st Tenor in E \flat .

f *ff* *mf* *cres:* *ff* *p* *TO CODA.* 1. 2. *ff*

SAND DANCE.

p PLANTATION CHORUS. (SING AD LIB)
ALTO.

p Come, sweet Clo_rin_da, stray a while with me, Under the star_lit sky, The star_lit sky,
Gently the night wind sighs of love and thee, Un_to the moon on high-----
Come then and list to the sweet night_in_gale, Trilling his love-laden song, His love-laden
song, While I soft_ly tell the old sweet tale, Come, my Clo_rin_da, come-----

SAND DANCE.

f *ff* *D.C.* *TO CODA.* *f*

TWO STEP—"CLORINDA."

By kind permission of Messrs. J. B. Cramer & Co. Ltd.

MONTAGUE RING.

2nd Tenor in E♭.

f *ff* *mf*

mf

cres:

ff *p*

TO CODA.

SAND DANCE.

p

PLANTATION CHORUS. (SING AD LIB)

ALTO.

Come, sweet Clo-rin-da, stray a while with me, Under the star-lit sky, The star-lit sky,

Gently the night wind sighs of love and thee, Unto the moon on high....

Come then and list to the sweet night-in-gale, Trilling his love-laden song, his love-laden

song While I softly tell the old sweet tale, Come, my Clo-rin-da, come.

SAND DANCE.

f

D.C.

CODA.

ff

463.

TWO STEP—"CLORINDA."

MONTAGUE RING.

By kind permission of Messrs. J. B. Cramer & Co. Ltd.

1st Tenor Trombone.

f *ff* *mf* *mf* *cres:* *ff* *p* *p* *ff* *TO CODA.* 1. 2. 8

PLANTATION CHORUS. (SING AD LIB)
TENOR.

Come, sweet Clo-rin-da, stray a while with me, Under the star-lit sky, The star-lit sky,
Gently the night wind sighs of love and thee, Unto the moon on high....
Come then and list to the sweet night-in-gale, Trilling his love-laden song,....
And while I soft-ly tell the old sweet tale, Come, my Clo-rin-da, come.

SAND DANCE.

f *CODA.* *ff* *D.C.*

TWO STEP—"CLORINDA."

MONTAGUE RING.

By kind permission of Messrs. J. B. Cramer & Co. Ltd.

2nd. Tenor Trombone.

f *ff* *mf* *cres:* *ff*

p TO CODA. *ff*

1. 2. 8

PLANTATION CHORUS. (SING AD LIB.)

p Come, sweet Clo_rin_da, stray a while with me, Under the star_lit sky, The star_lit sky,
Gently the night wind sighs of love and thee, Unto the moon on high.
Come then and list to the sweet night_in_gale, Trilling his love-laden song,
And while I soft_ly tell the old sweet tale, Come, my Clo_rin_da come.

SAND DANCE.

f CODA. *ff* D.C.

TWO STEP—"CLORINDA"

MONTAGUE RING.

By kind permission of Messrs. J. B. Cramer & Co. Ltd.

Bass Trombone.

f *ff* *mf* *cres:* *ff* *p* *ff* *TO CODA.* 1. 2. *SAND DANCE.* 8

PLANTATION CHORUS. (SING AD LIB)
BASS.

p Come, sweet Clo-rin-da, stray a while with me, Under the star-lit sky,-----
Gently the night wind sighs of love and thee, Un-to the moon on high-----
Come then and list to the sweet night-in-gale, Trilling his love-laden song,
And while I soft-ly tell the old sweet tale, Come, my Clo-rin-da, come-----
SAND DANCE.

f *ff* *D.C.* *ff* *CODA.*

TWO STEP—"CLORINDA"

MONTAGUE RING.

By kind permission of Messrs. J. B. Cramer & Co. Ltd.

1st Baritone in Bb.

f *ff* *mf* *cres:* *ff* *p* *TO CODA.* 1. > > > 2. *A*

ff SAND DANCE.

p

PLANTATION CHORUS. (SING AD LIB)

TENOR.

p Come, sweet Clo_rin_da, stray a while with me, Under the star_lit sky, The star_lit sky,

Gently the night wind sighs of love and thee, Un_to the moon on high-----

Come then and list to the sweet night_in_gale, Trilling his love-laden song,----

And while I soft_ly tell the old sweet tale, Come, my Clo_rin_da, come-----

SAND DANCE.

f *TO CODA.* *ff* *A*

TWO STEP—"CLORINDA."

MONTAGUE RING.

By kind permission of Messrs. J. B. Cramer & Co. Ltd.

2nd Baritone in Bb.

f *ff* *mf* *mf* *cres:* *ff* *p* *ff* *p* *TO CODA.* *1* *2*

SAND DANCE.

p **PLANTATION CHORUS. (SING AD LIB)**
TENOR.

p Come, sweet Clo-rin-da, stray a while with me, Under the star-lit sky, The star-lit sky,
Gently the night wind sighs of love and thee, Un-to the moon on high-----
Come then and list to the sweet night-in-gale, Trilling his love-laden song,----
And while I soft-ly tell the old sweet tale, Come, my Clo-rin-da, come-----

SAND DANCE. *p* *ff* **D.C.**

CODA.

TWO STEP—"CLORINDA."

MONTAGUE RING.

By kind permission of Messrs. J. B. Cramer & Co. Ltd.

1st Tenor Trombone.

Musical score for 1st Tenor Trombone, measures 1-10. The key signature is one sharp (F#) and the time signature is 2/4. The score includes dynamic markings: *mf*, *ff*, *f*, *cres:*, and *ff*. A section marked *p* is labeled "TO CODA." and ends with a double bar line and a repeat sign. The final measure of this section is marked with a fermata and the number 8.

PLANTATION CHORUS. (SING AD-LIB)
TENOR.

Musical score for the Plantation Chorus, measures 11-18. The key signature is one sharp (F#) and the time signature is 2/4. The score includes the following lyrics:

p Comes sweet Clo-rin-da, stray a while with me, Under the star-lit sky, The star-lit sky,
 Gently the night wind sighs of love and thee, Unto the moon on high....
 Come then and list to the sweet night-in-gale, Trilling his love-laden song,....
 And while I soft-ly tell the old sweet tale, Come, my Clo-rin-da, come.

SAND DANCE.

Musical score for the Sand Dance, measures 19-22. The key signature is one sharp (F#) and the time signature is 2/4. The score begins with a dynamic marking of *f* and ends with a double bar line and the marking "D.C.". A section marked "CODA." follows, consisting of measures 21-22.

TWO STEP—"CLORINDA."

MONTAGUE RING.

By kind permission of Messrs. J. B. Cramer & Co. Ltd.

2nd Tenor Trombone.

f *ff* *mf* *cres:* *ff* *p* *ff*

TO CODA. 1. 2. 8

PLANTATION CHORUS. (SING AD LIB!)

p Come, sweet Clo-rin-da, stray a while with me, Under the star-lit sky, The star-lit sky,
Gently the night wind sighs of love and thee, Unto the moon on high.
Come then and list to the sweet night-in-gale, Trilling his love-laden song,
And while I soft-ly tell the old sweet tale, Come, my Clo-rin-da, come.

SAND DANCE.

f

CODA. *ff* ^

D. C.

TWO STEP—"CLORINDA."

MONTAGUE RING.

By kind permission of Messrs. J. B. Cramer & Co. Ltd.

Euphonion in B \flat .

f *ff* *mf* *mf* *cres:* *p* *ff*

TO CODA.

1 2

SAND DANCE.

p

PLANTATION CHORUS.
BASS.

p Come, sweet Clo - rin - da, stray a while with me, Under the star - lit sky,

Gent - ly the night wind sighs of love and thee, Unto the moon on high.

Come then and list to the sweet night - in - gale, Trilling his love - laden song, ----

And while I soft - ly tell the old sweet tale, Come, my Clo - rin - da, come.

SAND DANCE.

D. C.

CODA.

ff

TWO STEP—"CLORINDA"

MONTAGUE RING.

By kind permission of Messrs. J. B. Cramer & Co. Ltd.

Euphonion.

Musical score for Euphonion. The piece is in 2/4 time and B-flat major. It begins with a *f* (forte) dynamic, followed by a *ff* (fortissimo) section, then a *mf* (mezzo-forte) section. The score includes various musical notations such as slurs, accents, and crescendo markings. The piece concludes with a *ff* section and a *p* (piano) section. The final measure is marked "TO CODA."

SAND DANCE.

Musical score for the Sand Dance section. It is in 2/4 time and B-flat major. The piece begins with a *p* (piano) dynamic and features a series of eighth and sixteenth notes.

PLANTATION CHORUS. (SING AD LIB)

BASS.

Musical score for the Bass part of the Plantation Chorus. It is in 2/4 time and B-flat major. The piece begins with a *p* (piano) dynamic and features a series of eighth and sixteenth notes.

p Come, sweet Clo - rin - da, stray a while with me, Under the star - lit sky,

Musical score for the Bass part of the Plantation Chorus. It is in 2/4 time and B-flat major. The piece begins with a *p* (piano) dynamic and features a series of eighth and sixteenth notes.

Gently the night wind sighs of love and thee, Unto the moon on high

Musical score for the Bass part of the Plantation Chorus. It is in 2/4 time and B-flat major. The piece begins with a *p* (piano) dynamic and features a series of eighth and sixteenth notes.

Come then and list to the sweet night - in - gale, Trilling his love-laden song,

Musical score for the Bass part of the Plantation Chorus. It is in 2/4 time and B-flat major. The piece begins with a *p* (piano) dynamic and features a series of eighth and sixteenth notes.

And while I soft - ly tell the old sweet tale, Come, my Clo - rin - da, come.

SAND DANCE.

Musical score for the Sand Dance section. It is in 2/4 time and B-flat major. The piece begins with a *f* (forte) dynamic and features a series of eighth and sixteenth notes.

Musical score for the Coda section. It is in 2/4 time and B-flat major. The piece begins with a *ff* (fortissimo) dynamic and features a series of eighth and sixteenth notes.

TWO STEP—"CLORINDA"

MONTAGUE RING.

By kind permission of Messrs. J. B. Cramer & Co. Ltd.

Bombardon in E \flat .

f *ff* *mf* *cres:* *ff* *p* TO CODA. 1. 2. *v*

SAND DANCE.

PLANTATION CHORUS. (SING AD LIB.)

p Come, sweet Clo - rin - da, stray a while with me, Under the star - lit sky,
Gently the night wind sighs of love and thee, Unto the moon on high.
Come then and list to the sweet night - in - gale, Trilling his love-laden song,
And while I soft - ly tell the old sweet tale, Come, my Clo - rin - da, come.

SAND DANCE.

f CODA. *ff* *v* D.C.

TWO STEP "CLORINDA."

MONTAGUE RING.

By kind permission of Messrs. J. B. Cramer & Co. Ltd.

Bombardon.

f *ff* *mf* *cres:* *ff* *p* *TO CODA.* 1. 2. *ff* *SAND DANCE.*

PLANTATION CHORUS. (SING AD LIB:)

p Come, sweet Clo - rin - da, stray a while with me, Under the star - lit sky,
Gently the night wind sighs of love and thee, Unto the moon on high.
Come then and list to the sweet night - in - gale, Trilling his love - laden song,
And while I soft - ly tell the old sweet tale, Come, my Clo - rin - da, come.

SAND DANCE.

f *ff* *TO CODA.* *ff* *D. C.*

TWO STEP—"CLORINDA."

MONTAGUE RING.

By kind permission of Messrs. J. B. Cramer & Co. Ltd.

Contra Bass in Bb.

f *ff* *mf*

mf

cres:

ff *p*

TO CODA.

ff

SAND DANCE.

p

PLANTION CHORUS. (SING AD LIB)
BASS.

p

p Come, sweet Clo - rin - da, stray a while with me, Under the star - lit sky,

Gent - ly the night wind sighs of love and thee, Unto the moon on high.

Come then and list to the sweet night - in - gale, Trilling his love - laden song,....

And while I soft - ly tell the old sweet tale, Come, my Clo - rin - da, come.

SAND DANCE.

f

D.C.

CODA.

ff

TWO STEP-"CLORINDA"

MONTAGUE RING.

By kind permission of Messrs. J. B. Cramer & Co. Ltd.

Drums.

Drum score for 'CLORINDA'. The score is written in 2/4 time and consists of six staves. The first staff begins with a bass clef and a key signature of one sharp (F#). Dynamics include *f*, *ff*, *mf*, and *p*. The second staff has a *mf* dynamic. The third staff has a *ff* dynamic. The fourth staff has a *p* dynamic. The fifth staff has a *ff* dynamic. The sixth staff has a *p* dynamic. The score includes various rhythmic patterns, including eighth and sixteenth notes, and rests. The piece concludes with a **TO CODA.** marking.

PLANTATION CHORUS. (SING AD LIB.)

TREBLE.

Treble vocal line for the Plantation Chorus. The melody is written in 2/4 time with a key signature of one sharp (F#). It begins with a *p* dynamic. The lyrics are: "Come, sweet Clo-rin-da, stray a while with me, Under the star-lit sky,-----"

Continuation of the treble vocal line. The lyrics are: "Gently the night wind sighs of love and thee, Un-to the moon on high.-----"

Continuation of the treble vocal line. The lyrics are: "Come then and list to the sweet night-in-gale, Trilling his love-laden song,"

Continuation of the treble vocal line. The lyrics are: "And while I soft-ly tell the old sweet tale, Come, my Clo-rin-da, come.-----"

SAND DANCE.

Sand Dance and Coda section. The Sand Dance is written in 2/4 time with a key signature of one sharp (F#). It begins with a *f* dynamic and includes the instruction "SAND PAPER." The score features eighth and sixteenth notes. The Coda section follows, marked with a **CODA.** and a *ff* dynamic. The piece concludes with a **D.C.** (Da Capo) instruction.